

BIG BLUE HVAC TRUCK
 MATERIAL: STEEL
 CAPACITY: 600 LBS
 HEIGHT: 60-1/2"
 WIDTH: 26"
 DEPTH: 21-1/2"
 SHOE LENGTH: 24"
 PRODUCT WEIGHT: 95 LBS

PROPRIETARY AND CONFIDENTIAL

THE INFORMATION CONTAINED IN THIS DRAWING IS THE SOLE PROPERTY OF VALLEY CRAFT. ANY REPRODUCTION IN PART OR AS A WHOLE WITHOUT THE WRITTEN PERMISSION OF VALLEY CRAFT IS PROHIBITED.

UNLESS OTHERWISE SPECIFIED:

DECIMALS
 2 PLACES ±0.01
 3 PLACES ±0.005
 ANGLE ±1°

GRIND/SAND SHARP EDGES .015 MAX DOES NOT APPLY TO DRILLED HOLE DIA.



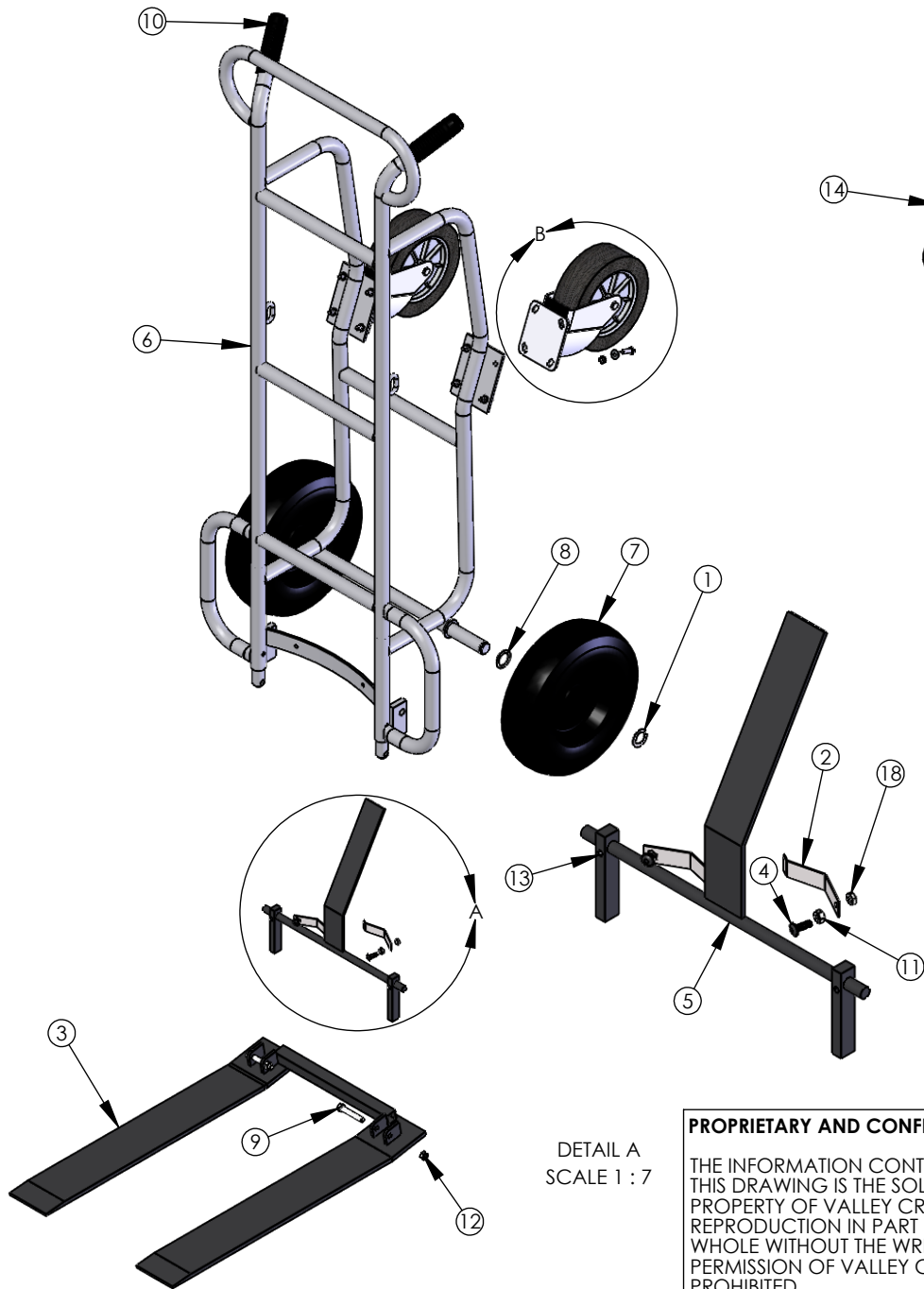
TITLE: TRK-PAL HVAC/CIRCUIT BLUE SWL

A		CREATED	DN	12/5/2019
CHG.	E.C.O.	DESCRIPTION / WAS	BY	DATE

ALL ANGLES ARE 90° UNLESS SPECIFIED

	NAME	DATE
DRAWN	DN	12/05/2019
CHECKED		
ENG APPR.		

SIZE	PART NO.		
A	F80233U5		
	MATL:		
SCALE: 1:24	WEIGHT: 87.27	SHEET 1 OF 3	



ITEM NO.	PART NUMBER	DESCRIPTION	QTY.
1	Z10223A9	RING-RTNG 1	2
2	F30212A6/R70212	SPG-TRIP PDL -- CS, use R70212 for RPMTS	2
3	F60010A9	SHOE WLDMT-24	1
4	Z10438A0	S-BHCS 1/4-20X3/4 BLK	2
5	F60008A1/R70006	TRIP PDL WLDMT -- CS, use R70006 for RPMTS	1
6	F68157A6	F W/HVAC SWL	1
7	Z30681A7	WHL-12 AIR	2
8	Z10012A4	BUSH-MACH 1x14GAx1-1/2 OD	2
9	Z10136A5	S-HHC 3/8-16X2-1/4	2
10	Z50007A7	GRIP-HDL 1-1/8" BLK	2
11	Z10035A7	NUT-HEX KEPS 1/4-20	2
12	Z10047A3	NUT-NYL NE 3/8-16	2
13	Z10007A9	PIN-SPG 1/4X3/4	1
14	Z30380A6	CSTR-8X2-1/2 SEMI-PNEU SWL	2
15	Z10036A6	NUT-HEX KEPS 5/16-18	8
16	Z10200A6	WASHER-1/4 FLAT USS	8
17	Z10123A0	S-HHC 5/16-18X1	8
18	Z10043A7	NUT-NYL NE 1/4-20	2

DETAIL A
SCALE 1 : 7

DETAIL B
SCALE 1 : 7

PROPRIETARY AND CONFIDENTIAL
 THE INFORMATION CONTAINED IN THIS DRAWING IS THE SOLE PROPERTY OF VALLEY CRAFT. ANY REPRODUCTION IN PART OR AS A WHOLE WITHOUT THE WRITTEN PERMISSION OF VALLEY CRAFT IS PROHIBITED.

UNLESS OTHERWISE SPECIFIED:
 DECIMALS
 2 PLACES ±0.01
 3 PLACES ±0.005
 ANGLE ±1°
 GRIND/SAND SHARP EDGES .015 MAX
 DOES NOT APPLY TO DRILLED HOLE DIA.



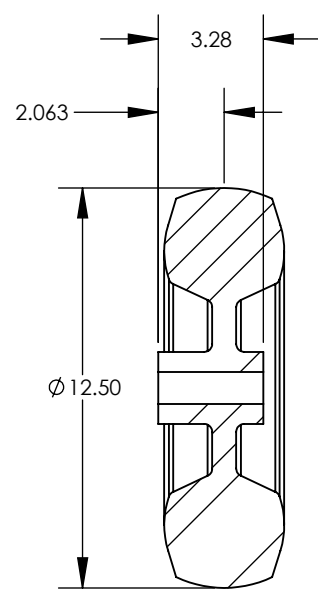
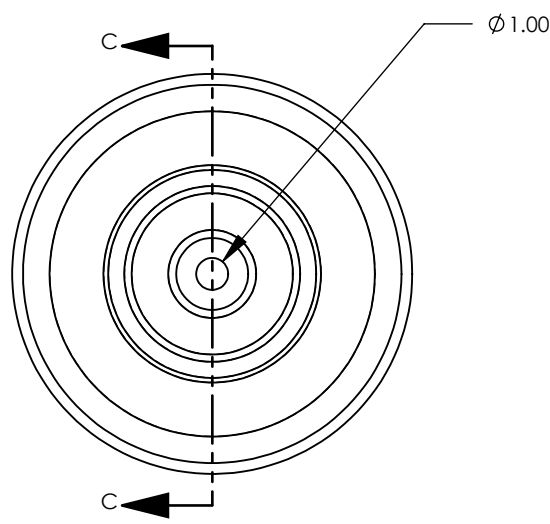
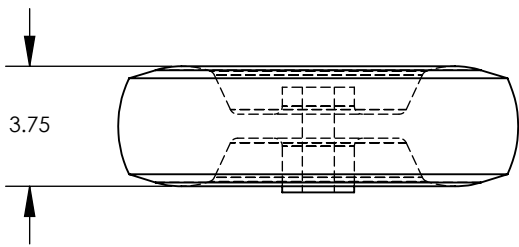
TITLE: TRK-HVAC FRAME UNPAINTED

B	-	created	DN	12/5/2019
CHG.	E.C.O.	DESCRIPTION / WAS	BY	DATE

ALL ANGLES ARE 90° UNLESS SPECIFIED

	NAME	DATE
DRAWN	DN	12/05/2019
CHECKED		
ENG APPR.		

SIZE	PART NO.
A	F80233
	MATL:
SCALE: 1:32	WEIGHT:
SHEET 2 OF 3	



SECTION C-C

- 1. TIRE SIZE: 12 - 1/2 X 3 - 3/4 (4.1/3.5 - 6)
- 2. TREAD PATTERN: SAWTOOTH
- 3. WHEEL MATERIAL: RUBBER
- 4. LOAD CAP./WHEEL: LOAD RANGE "B"
- 5. WEIGHT/WHEEL: 7#
- 6. OVERALL HUB WIDTH: 3.28
- 7. OFFSET CENTER OF WHEEL TO END OF HUB: 2 - 1/16
- 8. HUB MATERIAL: STEEL
- 9. BEARING TYPE: BALL
- 10. BORE OR AXLE SIZE: 1
- 11. HUB COLOR: SILVER
- 12. GREASE ZERK: NO
- 13. VENDOR: HOOSIER #869H34-82

Item Number	Part Number	Description	Qty.
1	Z30007A9	TIRE-AIR 12	1
2	Z30008A8	TUBE-AIR 12	1
3	Z30002A4	BEARING-FLG 1/RPMT	2


B		DRAWN FROM CADKEY	PBS	1/08
CHG.	E.C.O.	DESCRIPTION / WAS	BY	DATE

PROPRIETARY AND CONFIDENTIAL
 THE INFORMATION CONTAINED IN THIS DRAWING IS THE SOLE PROPERTY OF VALLEY CRAFT. ANY REPRODUCTION IN PART OR AS A WHOLE WITHOUT THE WRITTEN PERMISSION OF VALLEY CRAFT IS PROHIBITED.

ALL ANGLES ARE 90° UNLESS SPECIFIED

UNLESS OTHERWISE SPECIFIED:
 DECIMALS
 2 PLACES ±0.01
 3 PLACES ±0.005
 ANGLE ±1°
GRIND/SAND SHARP EDGES .015 MAX DOES NOT APPLY TO DRILLED HOLE DIA.

	NAME	DATE
DRAWN	salvopb	1/08
CHECKED		
ENG APPR.		



2001 South Hwy. 61, Lake City, MN 55041-9555, U.S.A.

TITLE: WHL-12 AIR

SIZE	PART NO.
A	Z30681A7
MATL:	

SCALE: 1:6 WEIGHT: 12.53 SHEET 3 OF 3