

2 CYLINDER ALUMINUM TRUCK
 FRAME: ALUMINUM
 TUBING: 1 SCH 40 AL PIPE
 BRAKE: NO
 LOAD CAPACITY: 600 LBS
 HEIGHT: 50"
 WIDTH: 23"
 DEPTH: 26"
 SHOE SIZE: 19" WIDE X 14" DEEP
 11-3/4" X 19" USEABLE SHOE SIZE

PROPRIETARY AND CONFIDENTIAL

THE INFORMATION CONTAINED IN THIS DRAWING IS THE SOLE PROPERTY OF VALLEY CRAFT. ANY REPRODUCTION IN PART OR AS A WHOLE WITHOUT THE WRITTEN PERMISSION OF VALLEY CRAFT IS PROHIBITED.

UNLESS OTHERWISE SPECIFIED:

DECIMALS
 2 PLACES ± 0.01
 3 PLACES ± 0.005
 ANGLE $\pm 1^\circ$

GRIND/SAND SHARP EDGES .015 MAX DOES NOT APPLY TO DRILLED HOLE DIA.



2001 South Hwy. 61, Lake City, MN 55041-9555, U.S.A.

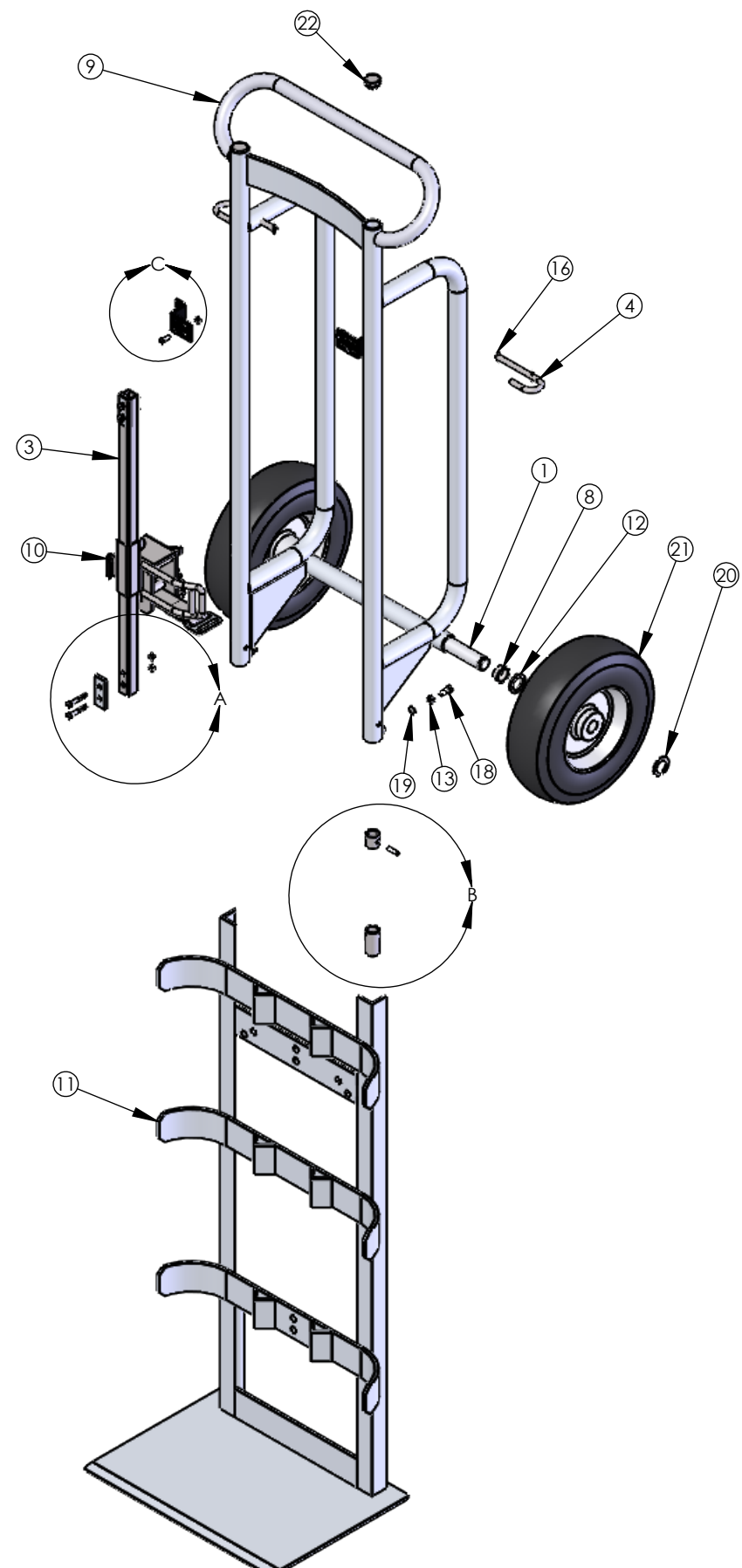
TITLE: TRK-CYL/1640AA

A	-	CONVERTED TO SW	TSH	07/19/2018
CHG.	E.C.O.	DESCRIPTION / WAS	BY	DATE

ALL ANGLES ARE 90° UNLESS SPECIFIED

	NAME	DATE
DRAWN	TSH	07/19/2018
CHECKED		
ENG APPR.		

SIZE	PART NO.
A	F86070A9
	MATL: Material <not specified>
SCALE: 1:16	WEIGHT: 69.08 SHEET 1 OF 3



Not Modeled
 Z30159A5: COMPRESSION SPRING 9/16 X 2-1/4 Qty. 2
 Z30160A2: COMPRESSION SPRING 1 X 11-3/8 Qty. 2

ITEM NO.	PART NUMBER	DESCRIPTION	QTY.
1	F30001A1	AXLE-800SS	1
2	F50475A6	SPACER-A STD/C C/H	2
3	F50492B3	BAR-RSA/1600	1
4	F50527A4	PIN-LOCK SL/SH/400	2
5	F50531A8	CLIP-SL/SH RH/400A	2
6	F50534A5	COLLAR-LONG (400)	2
7	F50536A3	COLLAR SHT/400	2
8	F57260A9	BRG-STL FLG 1.01X1.05X.5	2
9	F60526A4	F W/1640AA	1
10	F60896A6	RSA ASSY	1
11	F61246A1	SHOE WLDMT-SL/1600A	1
12	Z10013A3	BUSH-MACH 1x10GAx1-1/2 OD	2
13	Z10025A9	NUT-HEX JAM 5/16-18	2
14	Z10035A7	NUT-HEX KEPS 1/4-20	8
15	Z10062A3	PIN-DOWEL 1/4X1 HARDENED	2
16	Z10066A9	PIN-SPG 1/8X7/8	4
17	Z10099A0	S-FHM 1/4-20x3/4	4
18	Z10122A1	S-HHC 5/16-18X3/4	2
19	Z10208A8	WASHER-5/16 INT	2
20	Z10223A9	RING-RTNG 1	2
21	Z30681A7	WHL-12 AIR	2
22	Z50056A7	PLUG BOTTOM-1 1/8 ZP	2
23	Z10102A5	S-FHM 1/4-20x1-3/4	4

DETAIL A
SCALE 1 : 4

DETAIL C
SCALE 1 : 3

DETAIL B
SCALE 1 : 4



PROPRIETARY AND CONFIDENTIAL
 INFORMATION CONTAINED IN THIS DRAWING IS THE SOLE PROPERTY OF VALLEY CRAFT. ANY REPRODUCTION IN PART OR AS A WHOLE WITHOUT THE WRITTEN PERMISSION OF VALLEY CRAFT IS PROHIBITED.

UNLESS OTHERWISE SPECIFIED:
 DECIMALS
 2 PLACES ±0.01
 3 PLACES ±0.005
 ANGLE ±1°
 GRIND/SAND SHARP EDGES .015 MAX
 DOES NOT APPLY TO DRILLED HOLE DIA.



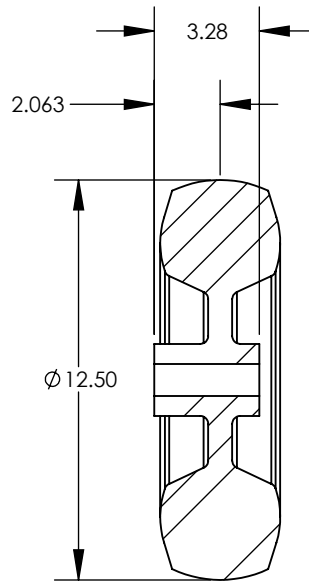
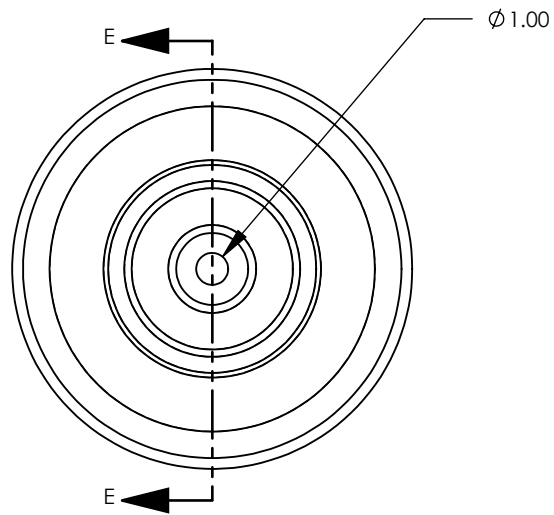
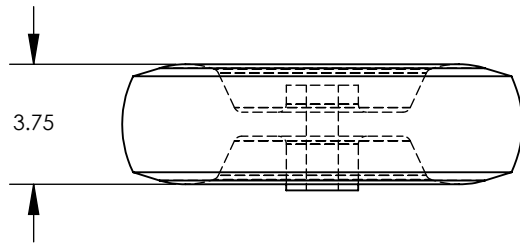
2001 South Hwy. 61, Lake City, MN 55041-9555, U.S.A.
 TITLE: TRK-CYL/1640AA

CHG	E.C.O.	DESCRIPTION / WAS	BY	DATE
A	-	CONVERTED TO SW	TSH	07/19/2018

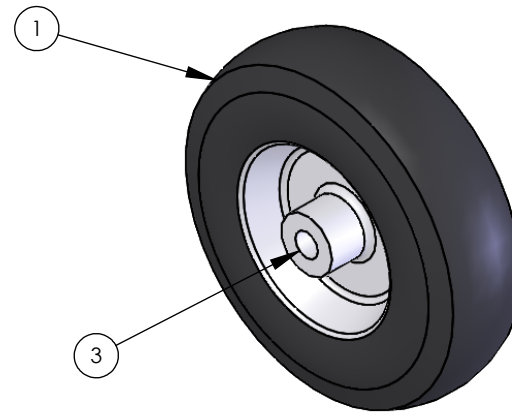
**ALL ANGLE ARE 90°
UNLESS SPECIFIED**

NAME	DATE
DRAWN TSH	07/19/2018
CHECKED	
ENG APPR.	

SIZE	PART NO. F86070A9
B	MATL: Material <not specified>
SCALE: 1:16	WEIGHT: 69.08 SHEET 2 OF 3



SECTION E-E



- 1. TIRE SIZE: 12 - 1/2 X 3 - 3/4 (4.1/3.5 - 6)
- 2. TREAD PATTERN: SAWTOOTH
- 3. WHEEL MATERIAL: RUBBER
- 4. LOAD CAP./WHEEL: LOAD RANGE "B"
- 5. WEIGHT/WHEEL: 7#
- 6. OVERALL HUB WIDTH: 3.28
- 7. OFFSET CENTER OF WHEEL TO END OF HUB: 2 - 1/16
- 8. HUB MATERIAL: STEEL
- 9. BEARING TYPE: BALL
- 10. BORE OR AXLE SIZE: 1
- 11. HUB COLOR: SILVER
- 12. GREASE ZERK: NO
- 13. VENDOR: HOOSIER #869H34-82

Item Number	Part Number	Description	Qty.
1	Z30007A9	TIRE-AIR 12	1
2	Z30008A8	TUBE-AIR 12	1
3	Z30002A4	BEARING-FLG 1/RPMT	2

B		DRAWN FROM CADKEY	PBS	1/08
CHG.	E.C.O.	DESCRIPTION / WAS	BY	DATE

PROPRIETARY AND CONFIDENTIAL

THE INFORMATION CONTAINED IN THIS DRAWING IS THE SOLE PROPERTY OF VALLEY CRAFT. ANY REPRODUCTION IN PART OR AS A WHOLE WITHOUT THE WRITTEN PERMISSION OF VALLEY CRAFT IS PROHIBITED.

ALL ANGLES ARE 90° UNLESS SPECIFIED

UNLESS OTHERWISE SPECIFIED:

DECIMALS
2 PLACES ±0.01
3 PLACES ±0.005
ANGLE ±1°

GRIND/SAND SHARP EDGES .015 MAX DOES NOT APPLY TO DRILLED HOLE DIA.

	NAME	DATE
DRAWN	salvopb	1/08
CHECKED		
ENG APPR.		



2001 South Hwy. 61, Lake City, MN 55041-9555, U.S.A.

TITLE: WHL-12 AIR

SIZE: **A** **PART NO.:** Z30681A7

MATL:

SCALE: 1:6 WEIGHT: 12.53 SHEET 3 OF 3