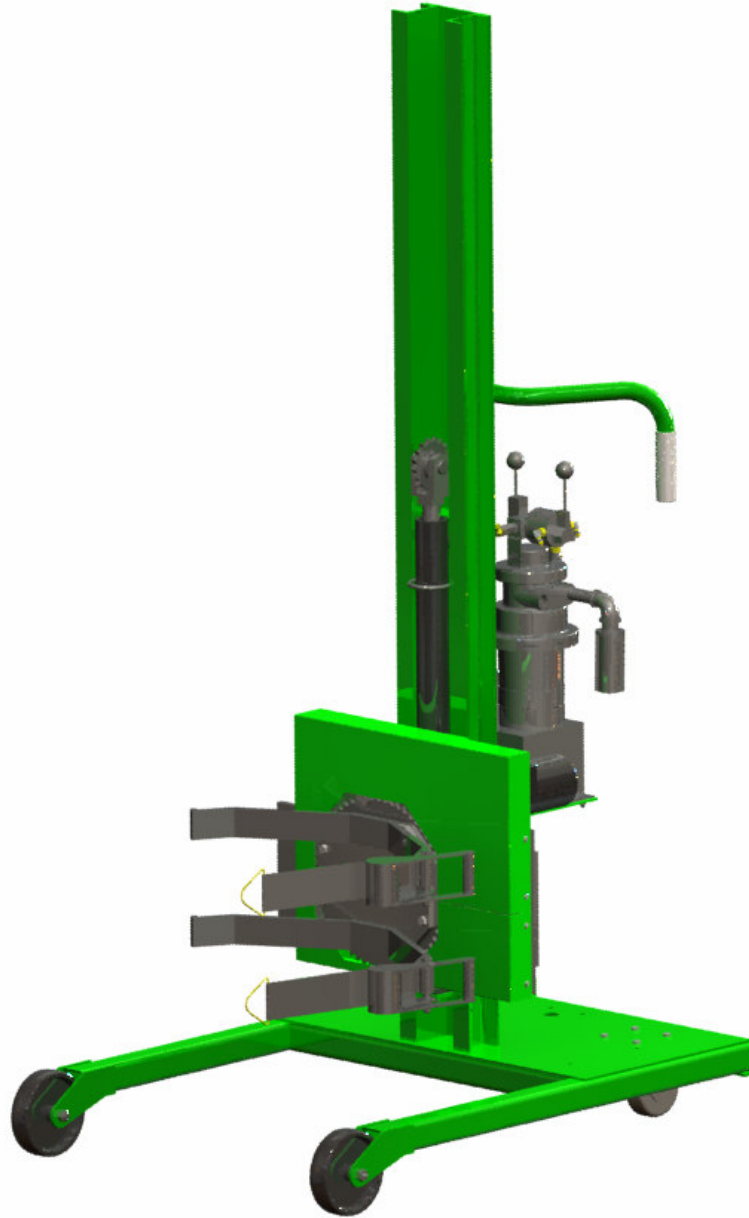


**ROTO-LIFT**  
**AIR POWERED**



**INSTRUCTION MANUAL**

VALLEY CRAFT, INC. 2001 SOUTH HWY. 61, LAKE CITY, MN 55041 PH: 1-800-328-1480

Z41585A5 Last Updated 07/11



## **TABLE OF CONTENTS**

<b>A.</b>	<b>OPERATING INSTRUCTIONS</b>	<b>PG. 3</b>
<b>B.</b>	<b>SAFETY</b>	<b>PG. 4</b>
<b>C.</b>	<b>MAINTENANCE INFORMATION</b>	<b>PG. 4</b>
<b>D.</b>	<b>MSDS</b>	<b>PG. 4</b>
<b>E.</b>	<b>PARTS DIAGRAMS</b>	<b>PG. 5-8</b>
<b>F.</b>	<b>HYDRAULIC/ELECTRICAL SCHEMATIC</b>	<b>PG. 9</b>
<b>G.</b>	<b>TROUBLESHOOTING CHART</b>	<b>PG. 10</b>
<b>H.</b>	<b>WARRANTY STATEMENT</b>	<b>PG. 11</b>

## A. Operating Instructions

**NOTE: IT IS RECOMMENDED THAT ALL OPERATORS FAMILIARIZE THEMSELVES WITH THE MACHINE AND DEVELOP SAFE WORKING HABITS.**

1. **IMPORTANT!** Remove solid plug on hydraulic reservoir and install breather cap (included) for proper air venting.
2. Remove solid plug nearest the mast (on left side of motor), and install the lubricator, regulator, gauge and filter (**in that order**).
3. Next, remove the other solid plug and install the muffler.
4. Attach air line to the filter (80 P.S.I., 50 scfm, 3/4" air line is recommended for proper use). Need ball joint shut off to release down pressure. Customer to supply.
5. To raise the attachment, push handle (located on the right at the top of the hydraulic power unit) forward until desired height is achieved.
6. Lower the attachment by pulling handle back toward operator.
7. Rotate the attachment by pushing or pulling handle (located on the left of the hydraulic power unit) forward or back.
8. Loosen straps according to the following directions:
  - a.) Depress "finger release" on ratchet and fold handle open.
  - b.) Pull strap through ratchet just far enough to unhook metal ring from t-bar at the end of the rotating arm.
  - c.) Perform this on both ratchets.
9. Move the Roto-Lift forward, straddling the drum, and center the rotating arms to the drum by raising them up or down.
10. After arms are centered on the drum, push forward until drum touches the rear of the rotating arms.
11. Pull both straps around the front of the drum and hook the metal ring onto the t-bar on the ends of the rotating arms.
12. By depressing the "finger release" on the ratchet and returning it to the original position, you may now ratchet the straps tight around the drum.
13. With BOTH straps tight, raise the drum by using the up/down (right) lever.
14. To dump, raise the drum to the desired height and move the rotating (left) lever.

## **B. Safety Information**

1. When transporting a load, it is recommended that the attachment is lowered as close to the floor as possible to reduce the chances of accidents during transport.
2. Do not leave load suspended for an extended period of time or premature wear to the lifting cylinder will occur.
3. Maximum lifting capacity is 1,000 pounds and this capacity is governed by the attachment capacity.

## **C. Maintenance Information**

1. Setting up a preventative maintenance schedule of the FRL is recommended. Clean, lubricated air at the optimum pressure will reduce downtime, promote longer component life, and lower maintenance costs.
2. The lifting chain should be oiled periodically as needed. This is best accomplished by lowering the backplate completely and spraying lubricant onto the chain.
3. Check nylon straps occasionally for wear and replace as necessary.

## **D. Material Safety Data Sheets (MSDS)**

A Material Safety Data Sheet (MSDS) provides information on the safe use, handling and potential hazards of a product. This information assists with the proper response in the event of an emergency.

Valley Craft maintains material safety data sheets (MSDS) on all our products. You are urged to obtain copies of the relevant MSDSs before using our products to protect yourself and others against any known health or safety hazards described in these MSDSs. Valley Craft strives to make safety a top priority. Do not hesitate to contact us to discuss any safety aspects of our products.

The relevant MSDS codes for Valley Craft products are listed below.

[www.conocophillips.com](http://www.conocophillips.com)

Super ATF Transmission Oil, MSDS Code 778846

Super-Sta Grease, MSDS Code 775440

[www.batteriesplus.com](http://www.batteriesplus.com)

Sealed Lead Acid Battery

SLA for English version

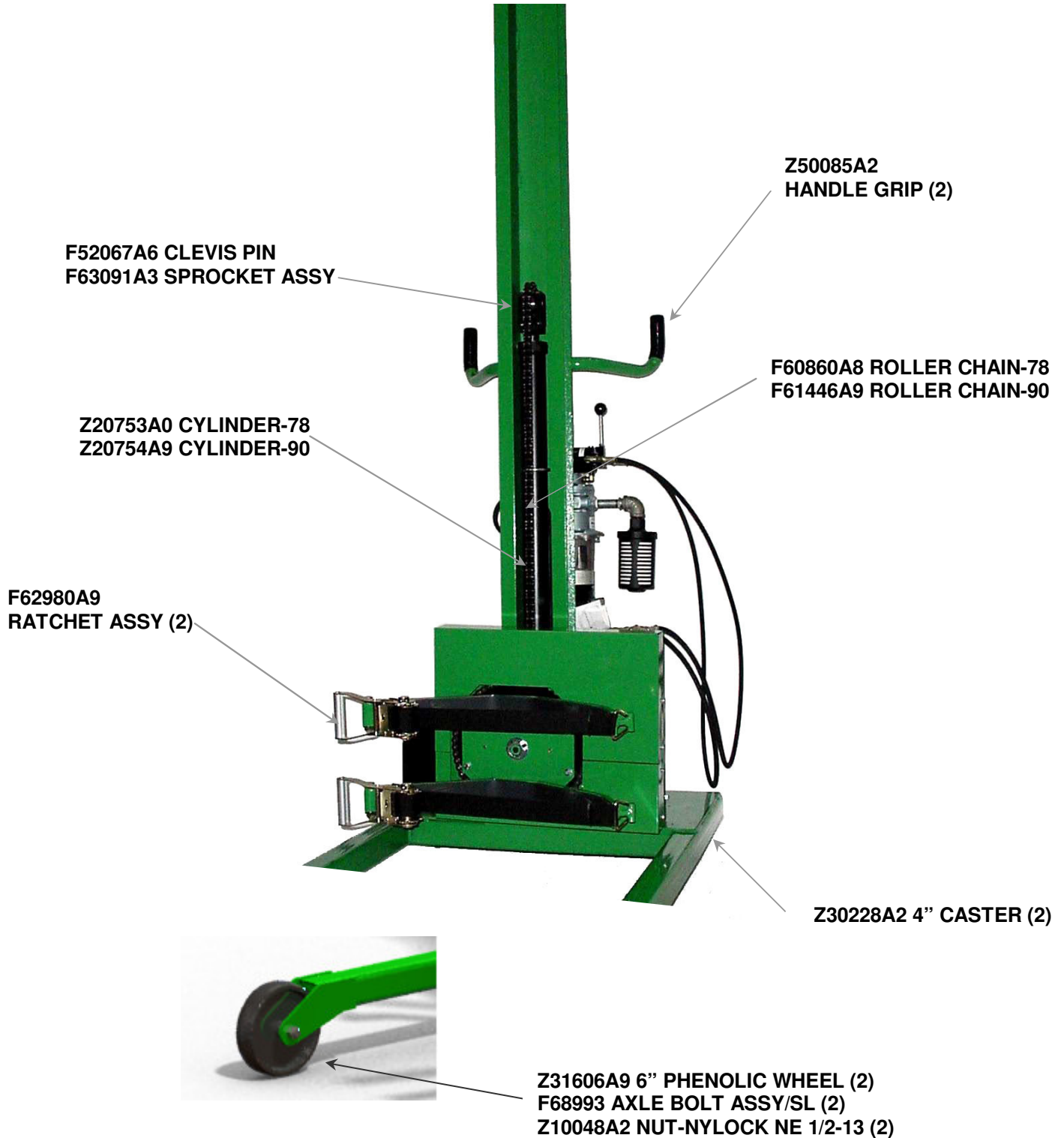
SLA Sp for the Spanish version

[Paint](#)

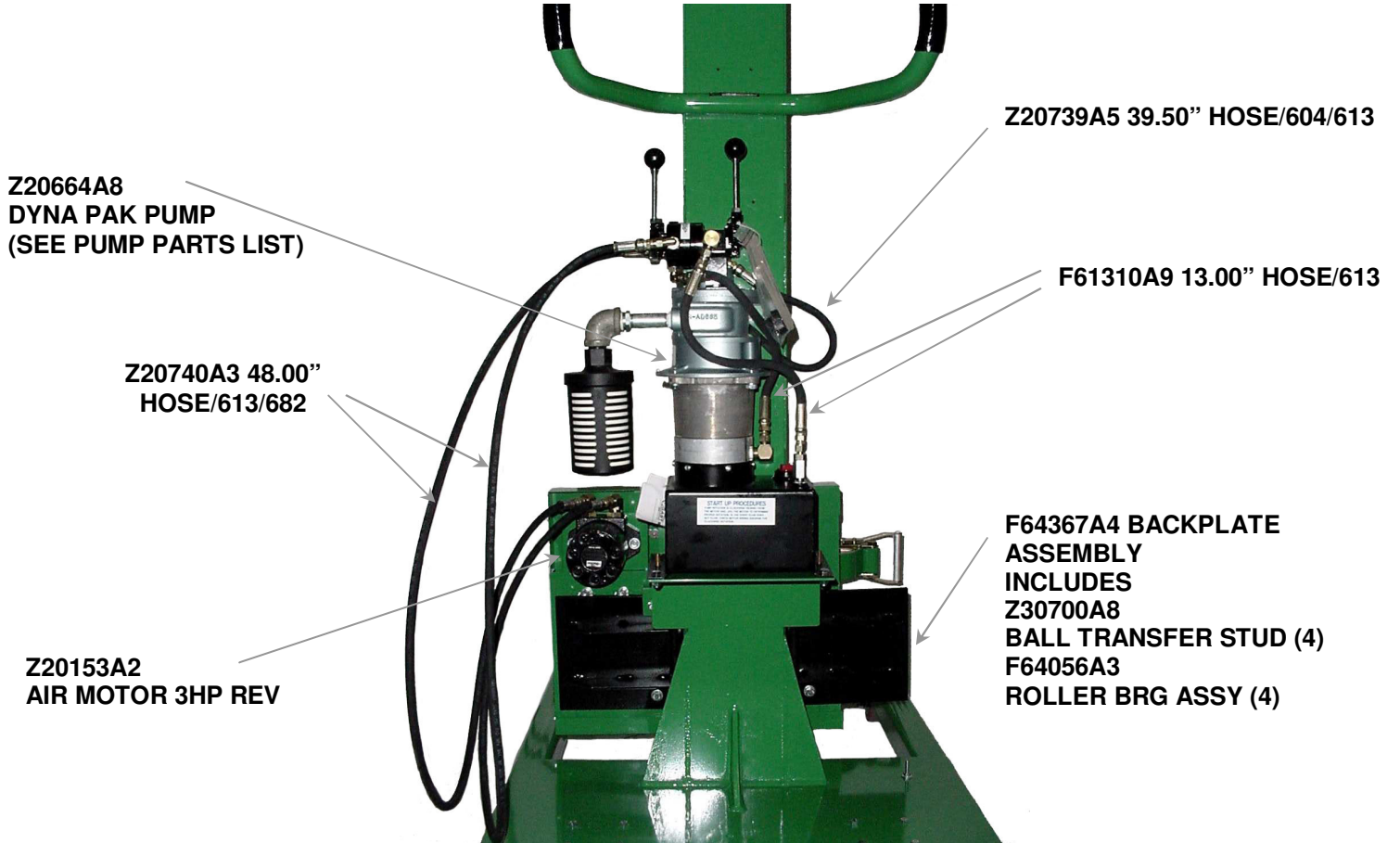
Contact Valley Craft Customer Services at 1-800-328-1480 or on the web at [customer@valleycraft.com](mailto:customer@valleycraft.com)

## E. Parts Diagrams

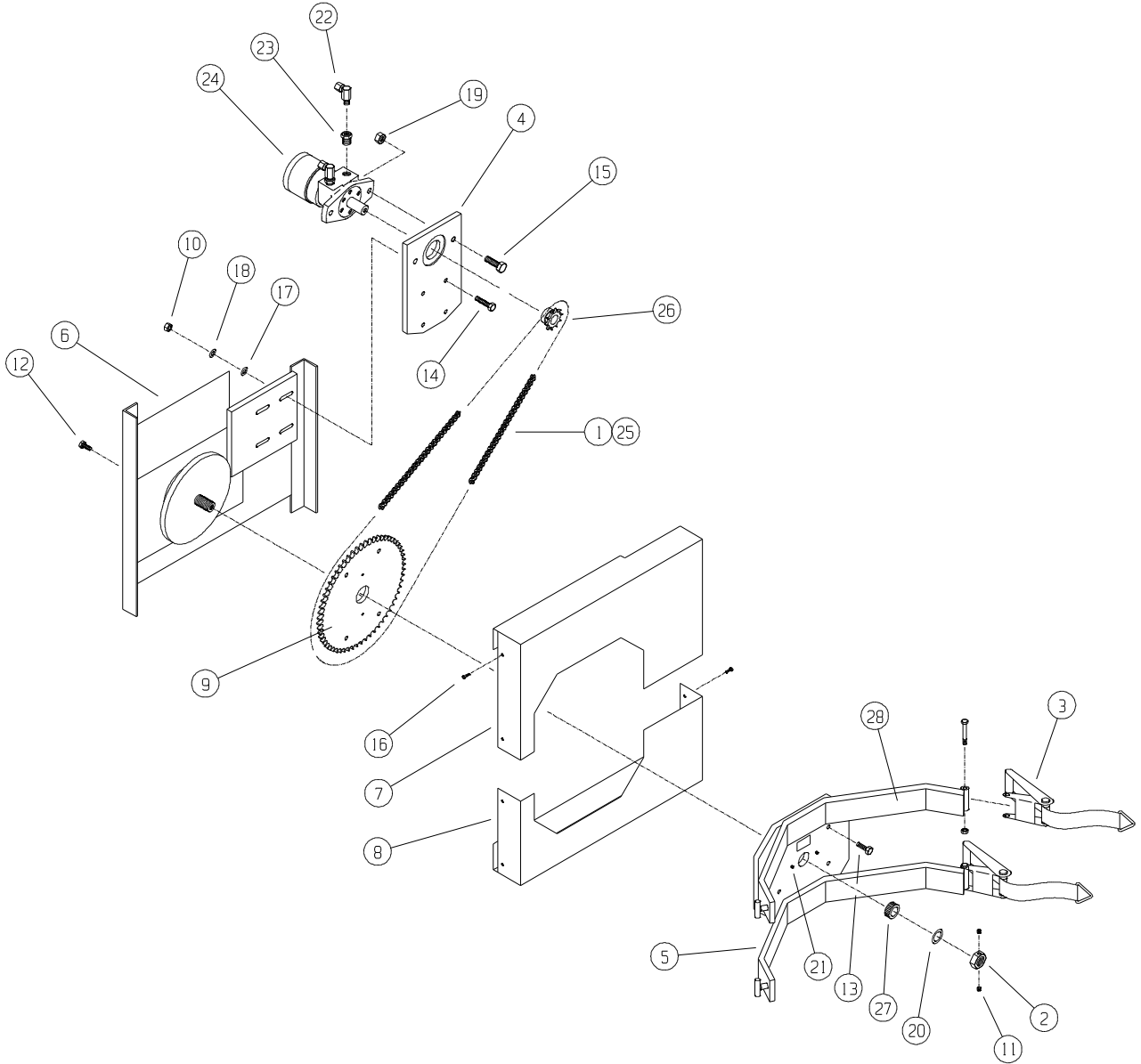
### F88589B9 ROTOLIFT-78 AIR F88590B6 ROTOLIFT-90 AIR



**F87785B3 ROTO LIFT-78**  
**F87803B1 ROTOLIFT-90**  
**CONTINUED**



**FRONT SECTION ASSEMBLY**  
**F62848B1**



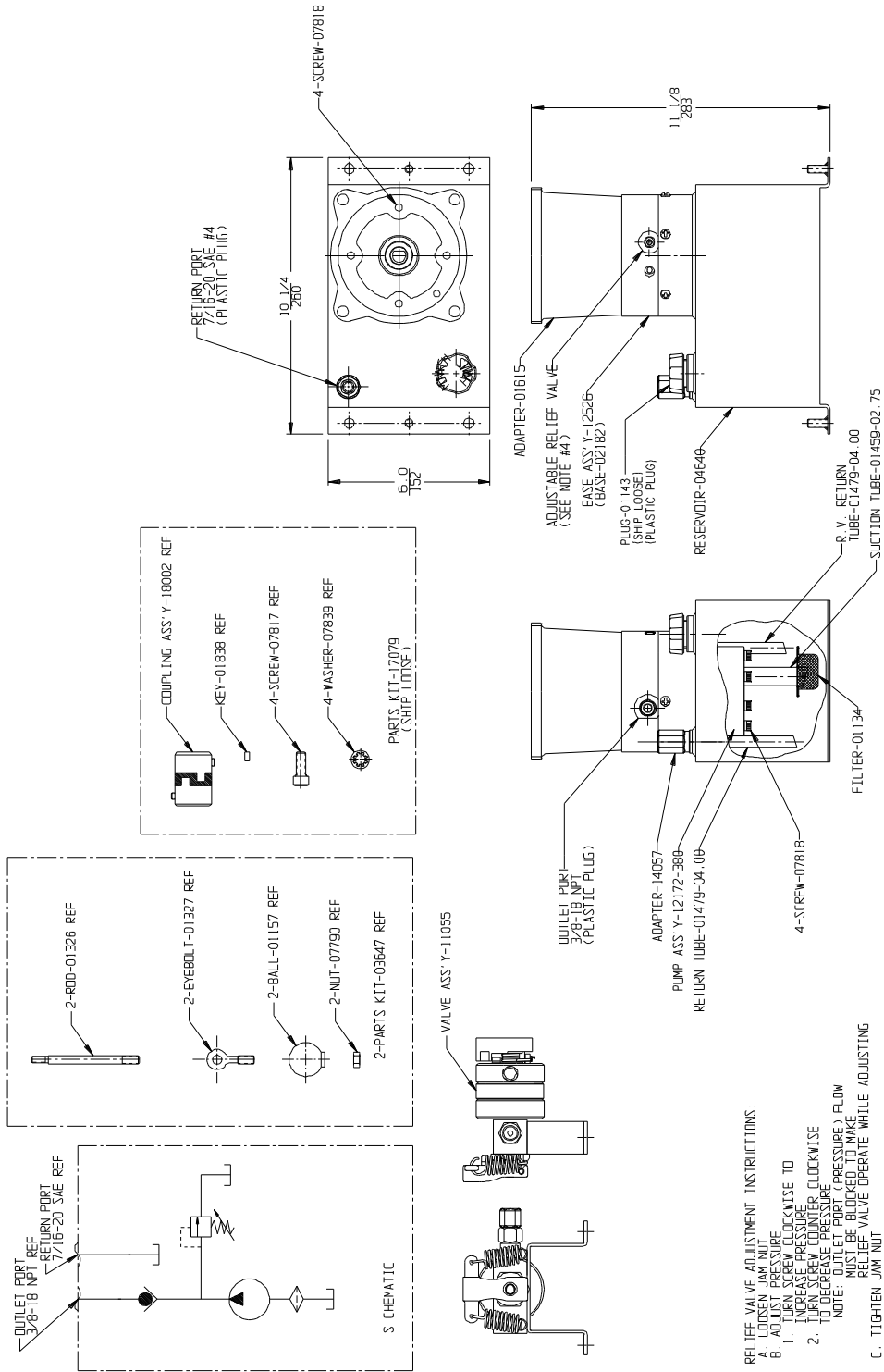


**FRONT SECTION ASSEMBLY**  
**PARTS LIST**

ITEM	PART NUMBER	DESCRIPTION	QTY.
1	F30214A4	CHAIN-ROLLER	1
2	F52527A0	NUT-LOCK 1-1/4	1
3	F62980A9	RATCHET ASSY	2
4	F52651A8	MNT-MOTOR	1
5	F62629A6	FRT SECT WLDMT	1
6	F62630A3	BACK SECT WLDMT	1
7	F52648A4	GUARD-CHAIN TOP	1
8	F52649A3	GUARD-CHAIN BTM	1
9	F52650A9	SPROCKET-LARGE	1
10	Z10026A8	NUT-HEX JAM 3/8-16ZP	2
11	Z10090A9	S-SHS 5/16-18X3/8	2
12	Z10122A1	S-HHC 5/16-18X3/4	2
13	Z10132A9	S-HHC 3/8-16X1	4
14	Z10134A7	S-HHC 3/8-16X1-1/2	2
15	Z10148A1	S-HHC 1/2-13X1-1/2	2
16	Z10166A8	#10-24X1/2	4
17	Z10202A4	WASHER-3/8 FLAT	4
18	Z10214A0	WASHER-3/8 LOCK	8
19	Z10393A3	NUT-LOCK 1/2-14	2
20	Z10430A5	BUSH-MACH 1X14GAX2	1
21	Z10627A7	ZERK-GREASE .188	2
22	Z20701A3	FTG 90 6801-6-10 NOW	2
24	Z20656A6	MOTOR-HYD	1
25	Z30059A6	LINK-CONN SPT/CLIP	1
26	Z30400A2	SPROCKET-SM W/SHS	1
27	Z30420A8	BRG-TAPER ROLL 1" BORE	1
28	Z50037A1	RUBBER PAD	4.17'

# F. Hydraulic/Electrical Schematic

## DYNA PAK PUMP ASSEMBLY Z20664A8



## G. Troubleshooting Chart

PROBLEM	POSSIBLE CAUSE	SOLUTION
Low torque	Worn vanes	Replace vanes. Clean & check filter Check lubrication Consider an air-line moisture trap if Corrosion is evident
Motor turns with Difficulty or not at all	Dirt, foreign material	Clean rotor & vanes with an appropriate solvent. Clean & check filter
Motor runs hot	Inadequate lubrication	Refill in-line lubricator
Unit will only lift a short distance at a time	Insufficient air source	Verify that the air source is capable of supplying 80 P.S.I. and 50 cfm with a 3/4" air line.

## H. Warranty Statement

### **Warranty & Limitation of Liability**

Valley Craft products are warranted for a period of one (1) year from date of shipment from Valley Craft's plant to be free from defects in material and workmanship under correct use, normal operating and proper application. However, parts of other than Valley Craft manufacture are subject ONLY to the original manufacturer's warranty. Valley Craft's obligation under warranty shall be limited to repair or exchange, at Valley Craft's option, FOB origin factory, of any Valley Craft product or part which proves to be defective as provided herein. Valley Craft reserves the right to either inspect the product at Buyer's location, or require it to be returned to the factory for inspection. The warranty contained herein does not extend to goods damaged, or subject to accident, abuse or misuse after shipment from Valley Craft's factory, nor to goods altered or repaired by anyone other than an authorized Valley Craft representative.

Buyer or user shall not alter, modify or use a Valley Craft product for anything other than its intended function. Valley Craft shall not in any way be responsible for the consequences of any such alteration, modification or misuse.

VALLEY CRAFT MAKES NO EXPRESS WARRANTIES OTHER THAN THOSE WHICH ARE SPECIFICALLY DESCRIBED HEREIN. Any description of the goods sold hereunder, including any references to Buyer's specifications and any descriptions in catalogs, circulars and other written material published by Valley Craft, is for the sole purpose of identifying such goods and shall not create an express warranty that the goods shall conform to such descriptions.

THIS WARRANTY IS EXPRESSLY IN LIEU OF ALL OTHER WARRANTIES, EXPRESS OR IMPLIED. THERE ARE NO IMPLIED WARRANTIES OF MERCHANTABILITY OR FITNESS FOR A PARTICULAR PURPOSE. THIS WARRANTY STATES VALLEY CRAFT'S ENTIRE AND EXCLUSIVE LIABILITY, AND BUYER'S EXCLUSIVE REMEDY FOR ANY CLAIM FOR DAMAGES IN CONNECTION WITH VALLEY CRAFT PRODUCTS, THEIR DESIGN, SUITABILITY FOR USE, INSTALLATION OR OPERATION OR FOR ANY CLAIMED DEFECTS. VALLEY CRAFT WILL IN NO EVENT BE LIABLE FOR INCIDENTAL OR CONSEQUENTIAL DAMAGES WHATSOEVER, NOR FOR ANY SUM IN EXCESS OF THE PRICE RECEIVED FOR THE GOODS FOR WHICH LIABILITY IS CLAIMED.

### **Technical Assistance/Warranty Procedure**

#### **What's Covered:**

- Parts and Labor to correct manufacturer's defect within one year of purchase.
- Freight Cost

#### **What's Not:**

- Normal wear items (seal kits, bearings, tires, etc.)

#### **What Voids the Warranty:**

- Dirt/Grime that directly causes malfunction of product
  - Abuse (i.e. Overloading, damaged, not properly maintained, etc.)
  - Product altered by customer
- \*See "Items not Under Warranty" below for items that have the warranty voided.

#### **Items Under Warranty (less than one year old):**

- Warranty replacement parts are provided only when the problem can be identified with near certainty. If not, the customer will return item to Valley Craft, freight collect, for troubleshooting and/or repair. When repaired, product will be returned to customer, freight prepaid. Otherwise, customer may call local authorized service technician for assistance. Under this arrangement, replacement parts will be sent at no charge but labor costs will NOT be covered.

#### **Items NOT Under Warranty (greater than one year old or \*having warranty voided):**

- Customer will return item to Valley Craft, freight prepaid, for troubleshooting and/or repair. Valley Craft will call customer with \$\$ estimate of parts and labor for approval before repairing. Product will be returned to customer, freight collect.

Or

- Customer may call local authorized service technician for repairs at their own expense.

Z4008 1A7