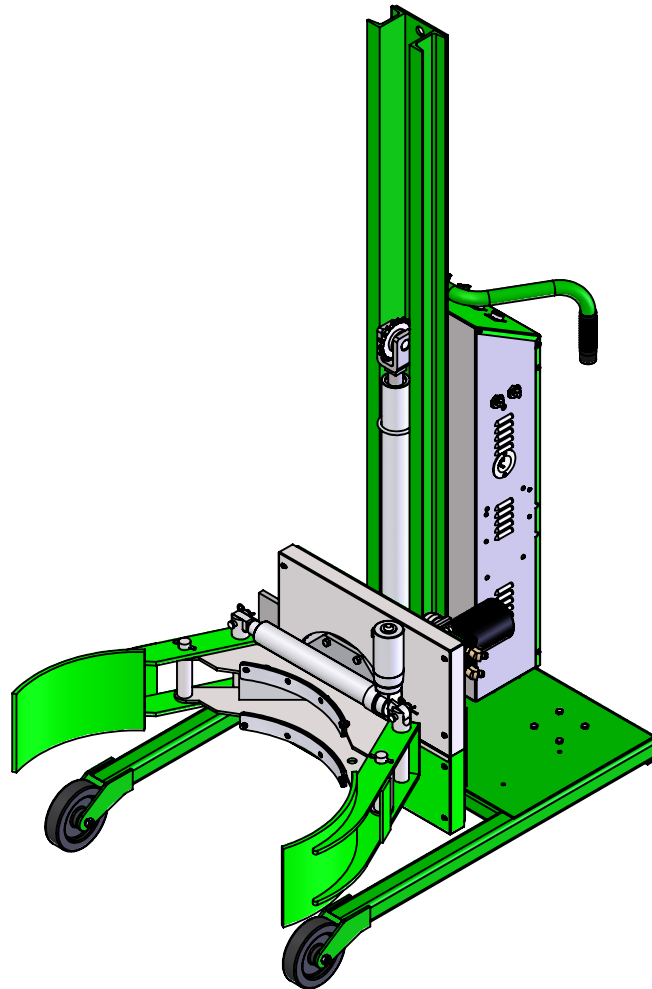


SOLUTIONS TO SIMPLIFY YOUR WORKLOAD
Drum Handling, Material Handling, Storage & Specialized Equipment



ROTOGRIP-78/SAE F88585C3 & F88586C2



BATTERY POWERED ROTOG RIP STRADDLE

Notice to Purchaser

All statements, technical information, and recommendations related to Valley Craft's products are based on information believed to be reliable, but the accuracy or completeness is not guaranteed. Before using this product, you must determine if it is suitable for your intended application or situation. You assume all risks and liability associated with such use or implementation.

Product Testing

We perform vigorous in-house safety and durability testing to ensure that the performance of our products meets the demands of the workplace. We also expect the same from manufacturers who supply components for our products. We do this to ensure that Valley Craft is a name that our customers trust and associate with quality.

Publication Revision Notice

Following is a history of changes to this publication, including the current revision.

Previously Updated: 09/2019

Last Updated: 01/2021

Copyright Notice

© Valley Craft, Inc. All rights reserved. No part of this publication may be reproduced, photocopied, stored on a retrieval system, or transmitted without the express written consent of Valley Craft.

Trademarks

The Valley Craft logo is a Valley Craft Trademark. All other company or product names are trademarks or registered trademarks of their respective owners. Use of a term in this document should not be regarded as affecting the validity of any trademark or service mark.

BATTERY POWERED ROTOG RIP STRADDLE

■ Table of Contents

| | |
|---|--------------|
| Safety | 4-6 |
| • Safety Overview | 4 |
| • Safety Message Conventions | 5 |
| • Material Safety Data | 6 |
| Product Description | 7 |
| • Specifications | 7 |
| • Features | 7 |
| Unpacking and Assembly | 8 |
| • Receiving and Inspection | 8 |
| Operation | 8 |
| • Operating Procedures | 8 |
| Maintenance and Adjustments | 9-10 |
| • Maintenance and Adjustment Procedures | 9 |
| • Charging Battery | 10 |
| Troubleshooting | 11 |
| • Troubleshooting Procedures | 11 |
| Replacement | 12 |
| • Replacement Procedures | 12 |
| Parts List | 13-19 |
| • Rotolift Isometric & BOM | 13-16 |
| • Backplate Assy & BOM | 17 |
| • Control Box & BOM | 18 |
| • Front Section & BOM | 19 |
| Equipment Drawings | 20 |
| • Hydraulic Schematic..... | 20 |
| • Electrical Diagram | 20 |
| Warranty Information | 21 |
| • Warranty and Limitation of Liability | 21 |
| • Technical Assistance/Warranty Procedure | 21 |

BATTERY POWERED ROTOG RIP STRADDLE

Safety

Read and understand all safety information and become familiar with all safety symbols contained in this section before moving, operating or performing maintenance on this equipment.

■ Safety Overview

The following general safety precautions must be observed during all phases of operation, service, and repair of this equipment. Failure to comply with these precautions or with specific safety messages elsewhere in this manual may impair the protection provided by the equipment. Such noncompliance would also violate safety standards of design, manufacture, and intended use of the instrument.

- Observe all safety signs posted in your facility.
- Observe warnings, cautions, handling information, storage requirements and other information on all container labels.
- Wear safety glasses with side shields.
- Wear the proper protective clothing, gloves and other protective equipment before handling any chemicals.
- Use maximum care and good judgment in preventing accidents and injuries and seeking first aid.
- Understand your supervisor's instructions. Ask questions if you do not know how to do the job safely.
- Before you start work on any electrical system or circuit, check all power sources to ensure that the system or circuit is de-energized.
- Know the hazardous or potentially hazardous substances you work with or are present in your work area. Review Material Safety Data Sheets (MSDS) on these substances, or contact your supervisor.
- When transporting a load, it is recommended that the drum is lowered as close to the floor as possible to reduce the chance of accidents during transport
- Do not leave load suspended for an extended period of time or premature wear to the lifting cylinder will occur.
- Maximum lifting capacity is 800 pounds.

■ Safety Message Conventions

There are three types of safety notices that may be contained in this manual: **Danger**, **Warning** and **Caution** notices. These notices precede the procedural step or portion of text that presents the safety hazard.



DANGER

- **DANGER** indicates an imminently hazardous situation which, if not avoided, will result in death or serious injury. This signal word is to be limited to the most extreme situations.
-



WARNING

- **WARNING** indicates a potentially hazardous situation which, if not avoided, could result in death or serious injury.
-



CAUTION

- **CAUTION** indicates a potentially hazardous situation which, if not avoided, may result in minor or moderate injury. It may also be used to alert against unsafe practices
-

BATTERY POWERED ROTOGRIIP STRADDLE

■ Material Safety Data Sheets (MSDS)

A Material Safety Data Sheet (MSDS) provides information on the safe use, handling and potential hazards of a product. This information assists with the proper response in the event of an emergency.

Valley Craft maintains material safety data sheets (MSDS) on all our products. You are urged to obtain copies of the relevant MSDS before using our products to protect yourself and others against any known health or safety hazards described in the MSDS. Valley Craft strives to make safety a top priority. Do not hesitate to contact us to discuss any safety aspects of our products.

The relevant MSDS codes are listed below.

- www.conocophillips.com
Super ATF Transmission Oil, MSDS Code 778846
Super-Sta Grease, MSDS Code 775440
- www.batteriesplus.com
Sealed Lead Acid Battery
SLA for the English version
SLA Sp for the Spanish version
- [Paint](#)
Contact Valley Craft Customer Services at 1-800-328-1480 or on the web at customerservice@valleycraft.com

■ Additional Safety Information

As with any mechanical device, care must be taken during the installation, operation, and maintenance of the device in order to realize the maximum benefit from its ownership.

Note: All personnel involved in the use and maintenance of this device should be thoroughly familiar with the information contained in this manual. Furthermore, it is recommended that all personnel be given adequate instruction and a sufficient period of training in its actual use to insure safety of personnel and proper care of the equipment. It is suggested that the units be initially operated empty until becoming familiar with how the unit handles.

BATTERY POWERED ROTOGRIP STRADDLE

Product Description

The **Straddle-Lift Roto-Grip** is designed to be easier to move around than the counter-weighted lift. Roto-Lift can Lift and Rotate 360 degrees.

■ Specifications

The **Roto-Grip** specifications are shown in Table 1.

Table 1. Specifications

| | |
|----------------------|---|
| Dimensions | Height: 78" or 90" Depending on Model Width: 30.38 in. Depth: 42 in. |
| Weight | 513 lbs or 594 lbs Depending on Model |
| Load Capacity | 800 lbs |
| Power | 12v deep cycle battery |
| Lift Travel | 58" or 71" Depending on Model |
| Rotation | 360 degrees continuous |
| Wheels | Caster 3 x 1 1/16 Polyolefin Wheel 3 x 1 1/4 polyurethane |

■ Features

The **Roto-Grip** offers state-of-the-art design with many advanced features.

- 12v deep cycle battery
- Maintained contact switch (Rotate Switch)
- Emergency stop button
- Rear swivel polyolefin casters with front polyurethane wheels

BATTERY POWERED ROTOG RIP STRADDLE

■ Receiving and Inspecting

When unpacking this equipment, inspect the equipment for damage or mishandling. If damage is noted, file a damage claim with the carrier within 24 hours and call Valley Craft at 1-800-328-1480. Do not attempt to use the equipment.

Compare the contents of the shipment with the bill of lading. Report any missing items to the carrier and to Valley Craft immediately.

■ Operating Procedures

Only authorized personnel are permitted to use the **Rotogrip**. Every load and every situation is different. Every lift must be evaluated and planned. Observe the following procedures when using this equipment.

NOTE: IT IS RECOMMENDED THAT ALL OPERATORS FAMILIARIZE THEMSELVES WITH THE MACHINE AND DEVELOP SAFE WORKING HABITS.

- **IMPORTANT!** Remove solid plug on hydraulic reservoir and install breather cap (included in the Power Pak) for proper air venting.
- Install battery with the negative pole on the left hand side. Do not allow ground wire to come in contact with any other wires or a short will occur.
- Move the Rotogrip forward, straddling the drum, and center the rotating jaws to the drum using the “UP/DOWN” switch on the control panel.
- After jaws are centered on drum, push the unit forward the rest of the way so the drum touches the rear of the jaws.
- By simultaneously depressing the “ON” button and the “CLAMP” switch on the control panel securely squeeze the drum.
- NOTE: The “ON” button must be depressed before the clamping mode is operational.
- With the drum clamped, raise the drum by using the “UP” switch.
- To dump, raise the drum to the desired height and then depress the “ROTATE” switch, on top of the enclosure, in the direction you want the drum to dump.

BATTERY POWERED ROTOG RIP STRADDLE

Maintenance and Adjustments

■ Maintenance and Adjustment Procedures

To keep this equipment operating properly, timely maintenance and adjustments are required. These procedures should be performed only by qualified personnel who are familiar with the equipment. Ensure dumper is disconnected from power and chute is in down position prior to inspecting and performing maintenance and adjustment procedures.

Maintenance and adjustment procedures are shown in Table 2.

Table 2. Maintenance and Adjustment Procedures

| Component | Frequency | Operation | Procedure |
|-------------------------|-------------------|------------------|--|
| Bearings / Pivot Points | Monthly | Grease | Apply grease as required |
| Hydraulic Fluid Level | Monthly | Visually inspect | Should fluid level become low or appear dirty or “milky”, replace fluid with Super ATF Transmission fluid. Fluid level should be approximately 1-1/2” below fill hole. |
| Structural components | Monthly | Visually inspect | Replace as required |
| Hydraulic System | Monthly | Visually Inspect | Inspect for leaks and damaged hydraulic lines and correct as required |
| | At Start of Shift | Operate | Fully extend lift cylinder to purge oil from rod end of the cylinder |
| Electrical System | Monthly | Visually Inspect | Inspect for damaged or frayed wires and correct as required |

BATTERY POWERED ROTOGRIIP STRADDLE

■ Charging Batteries

1. Always turn the key to the “off” position when unit is not in use.
2. To charge your battery, plug a grounded extension cord into the built-in receptacle in the Control Box and an outlet.
3. The battery will charge automatically after the charger is plugged in and can be left unattended.
 - Batteries will generally require equal charging to work time.
4. Keep the charger plugged in to maintain a full battery level when the unit is not being used.

NOTES:

- See charger **MANUAL** for **SAFETY PRECAUTIONS** and charger **TROUBLESHOOTING**.
- **DO NOT USE BATTERIES UNTIL THEY ARE TOTALLY DISCHARGED.**
 - i. Doing so may damage your battery.
 - ii. For maximum battery life, your unit is equipped with a charger that collects information from the battery and adjusts the current and voltage accordingly. If your battery voltage drops below a certain threshold the charger will not charge the battery.
- If the battery becomes discharged and won't charge by ordinary means, a suggested solution is to “trick” the charger into reading a higher voltage from the battery. To do this connect a second, well-charged battery (12.4 volts or greater) in parallel with the dead battery-positive to positive, negative to negative. Then plug in your charger and charge the combination until the dead battery has enough voltage to enable being charged by itself.

BATTERY POWERED ROTOGRIIP STRADDLE

Troubleshooting

■ Troubleshooting Procedures

If troubleshooting or maintenance should be required, it should be performed only by qualified personnel trained to perform such procedures. .

Table 3. Trouble Shooting Procedures

| Problem | Possible Cause | Corrective Action |
|------------------------|-------------------------------------|--|
| Batteries won't charge | Faulty Battery(s) | Load test Batteries to ensure it is good. If battery is bad see page 12 for replacement. |
| | Not following recharging directions | Refer to Battery Charging Instructions (Page 10) |
| | Improper grounding/wiring | Tighten Charger mounting bolts and check wiring |
| Unit not functioning | Low/Dead Batteries | Recharge Batteries |
| | Improper grounding | Check Motor & Battery wire connections. Tighten if necessary |
| | Damaged or loose wiring | Check wiring to switches in Control Box. Re-attach loose connections. |
| | Bad Switches | Call factory for replacement |

Replacement

■ Replacement Procedures

Occasionally, it will be necessary to replace a part that has been Damaged or worn. Many parts on this Rotolift are replaceable. If Replacement of a part is required, it should be performed only by Qualified personnel who are familiar with the equipment.

See Sheet 11-18 for available replacement parts. Identify the part number you need. Contact Valley Craft Customer Service at 1-800-328-1480 or on the Web at customer@valleycraft.com.

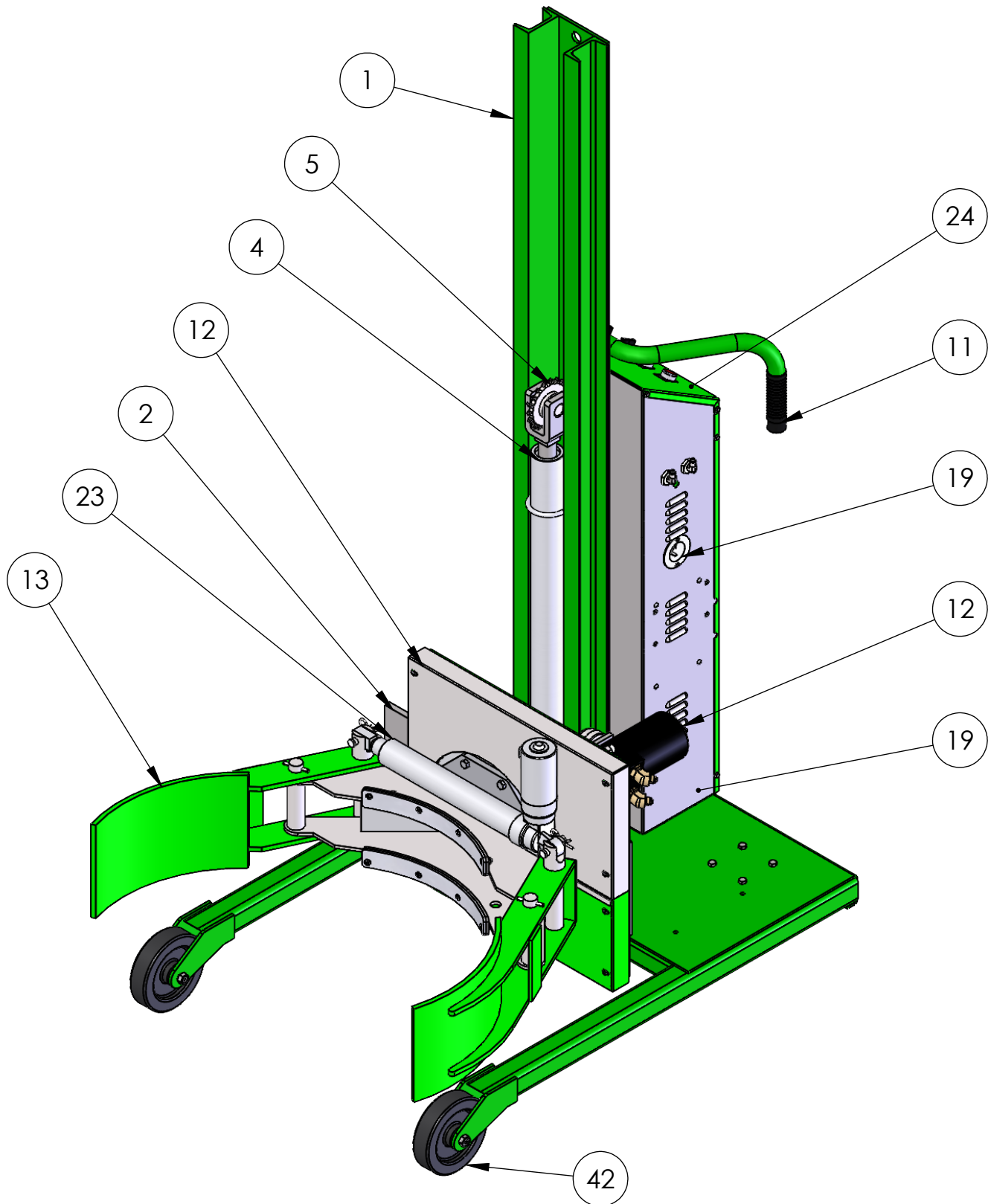
Information required when contacting Valley Craft:

- A. Company name and address
- B. Contact persons name
- C. Telephone number
- D. E-Mail address
- E. Model Number
- F. Date of manufacture
- G. Part number of Parts ordering

The model number and date of manufacture is stamped on a metal tag located on the back side of the frame just above the push handle.

BATTERY POWERED ROTOGRIP STRADDLE

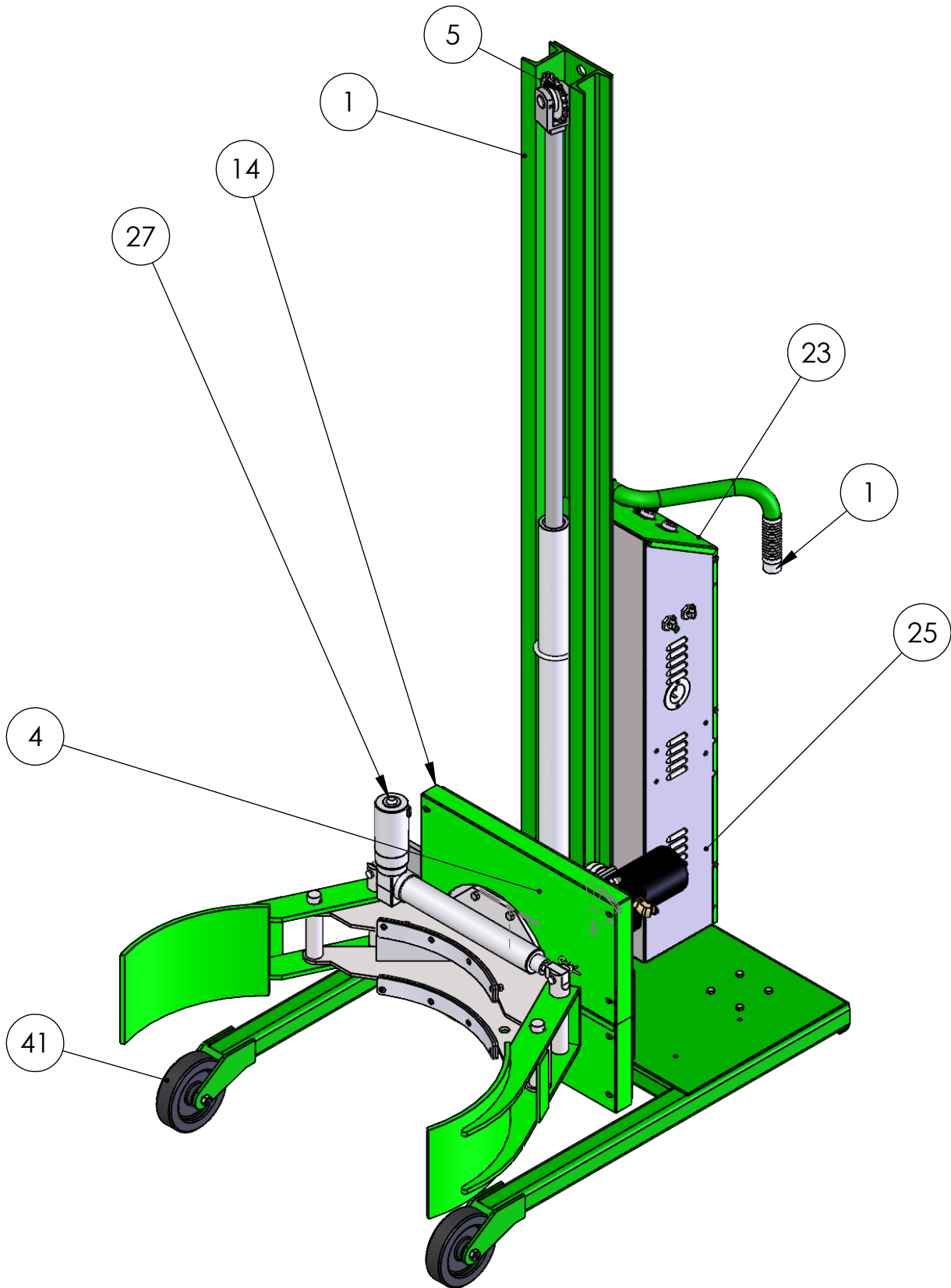
MODEL SHOWN
IS F88585C3



ROTOGRIP-78/SAE

| ITEM NO. | PART NUMBER | DESCRIPTION | QTY. |
|----------|-------------|--|------|
| 1 | F64331A0 | SL WLDMT-78 | 1 |
| 2 | F64367A4 | BACK PL ASSY | 1 |
| 3 | Z30228A2 | CSTR-4X1-1/2 SWL PCI | 2 |
| 4 | Z20753A0 | CYL ASSY-78 SAE | 1 |
| 5 | F63091A3 | SPROCKET ASSY-50C18 BRG 1.01 (purchased) | 1 |
| 6 | Z10123A0 | S-HHC 5/16-18X1 | 8 |
| 7 | Z10036A6 | NUT-HEX KEPS 5/16-18 | 10 |
| 8 | Z10072A1 | PIN-SPG 1/4X1-1/2 | 1 |
| 9 | F52067A6 | PIN-CLEVIS 1.00X2.375 (KANBAN) | 1 |
| 10 | Z10113A2 | S-HHC 1/4-20X1-1/4 | 2 |
| 11 | Z50085A2 | GRIP-HDL 1-1/4" BLK | 2 |
| 12 | F69394A9 | FRT SECT ASSEMBLY/ROTOGRIP | 1 |
| 13 | F63868A5 | JAW WLDMT/RGRIP (8") (stk) | 2 |
| 14 | F53690A9 | PIN 8 3/8 /RGRIP (stk) | 2 |
| 15 | F53691A8 | PIN 6 11/16 RGRIP | 2 |
| 16 | Z10074A9 | PIN-SPG 1/4X2 | 6 |
| 17 | Z30561A5 | PIN-CLEVIS 1/2 X 2 | 2 |
| 18 | Z10064A1 | PIN-HITCH CLIP #16 1/8 X 1.44 | 2 |
| 19 | F68725A5 | CTRL BOX ASSY/SL MOD | 1 |
| 20 | Z20734A0 | BREATHER 4 SAE SINTERED--COMES WITH CYLINDERS | 1 |
| 21 | Z40473A3 | TAG/SERIAL NUMBER/PRINT 2 COLORS | 1 |
| 22 | Z40456A4 | DECAL-WARNING BATTERY | 1 |
| 23 | Z00146A4 | ACTUATOR-LINEAR 12DC 500#-12 | 1 |
| 24 | F68729A1 | PANEL ASSY ROTO-GRIP | 1 |
| 25 | Z30415A5 | HDL PCKT PULL PLST 3.25X1.41 | 1 |
| 26 | Z40469A9 | DECAL-LOAD CAP 800 | 1 |
| 27 | F58825A8 | FRT-CTRL BOX | 1 |
| 28 | Z40457A3 | DECAL-CAUTION STRADDLE LIFT | 1 |
| 29 | Z40998A9 | DECAL-12V BATTERY | 1 |
| 30 | Z00172A5 | BATTERY-12V 80AH SEALED LEAD | 1 |
| 31 | Z20243A4 | FTG PIPE BULKHEAD 1/4 MPT x.92 | 2 |
| 32 | F61306A3 | PP-4SOL/3PORT 12V | 1 |
| 33 | F60860A8 | RLR CHAIN ASSY-78 | 1 |
| 34 | Z10186A4 | S-SHC 1/4-20X1/2 GR8 | 4 |
| 35 | Z10207A9 | WASHER-1/4 LOCK INT TOOTH | 4 |
| 36 | Z10020A4 | NUT-HEX FULL 1/2-13 | 2 |
| 37 | Z20600A2 | FTG STR 2404-4-4 | 2 |
| 38 | Z20586A6 | FTG 90 2501-4-4 | 2 |
| 39 | Z10571A1 | S-HHC 3/8-16X3/4 | 2 |
| 40 | Z10177A5 | S-RHM #10-24X1-1/4 | 4 |
| 41 | Z30476A8 | AXLE BOLT ASSY, GREASE, 1/2' X 3" | 2 |
| 42 | Z31606A9 | WHL-6 x 1-1/2 PCI, W/BUSHING | 2 |
| 43 | Z42224A5 | DECAL - WARNING JAW ASSY IN DOWN POSITION | 1 |

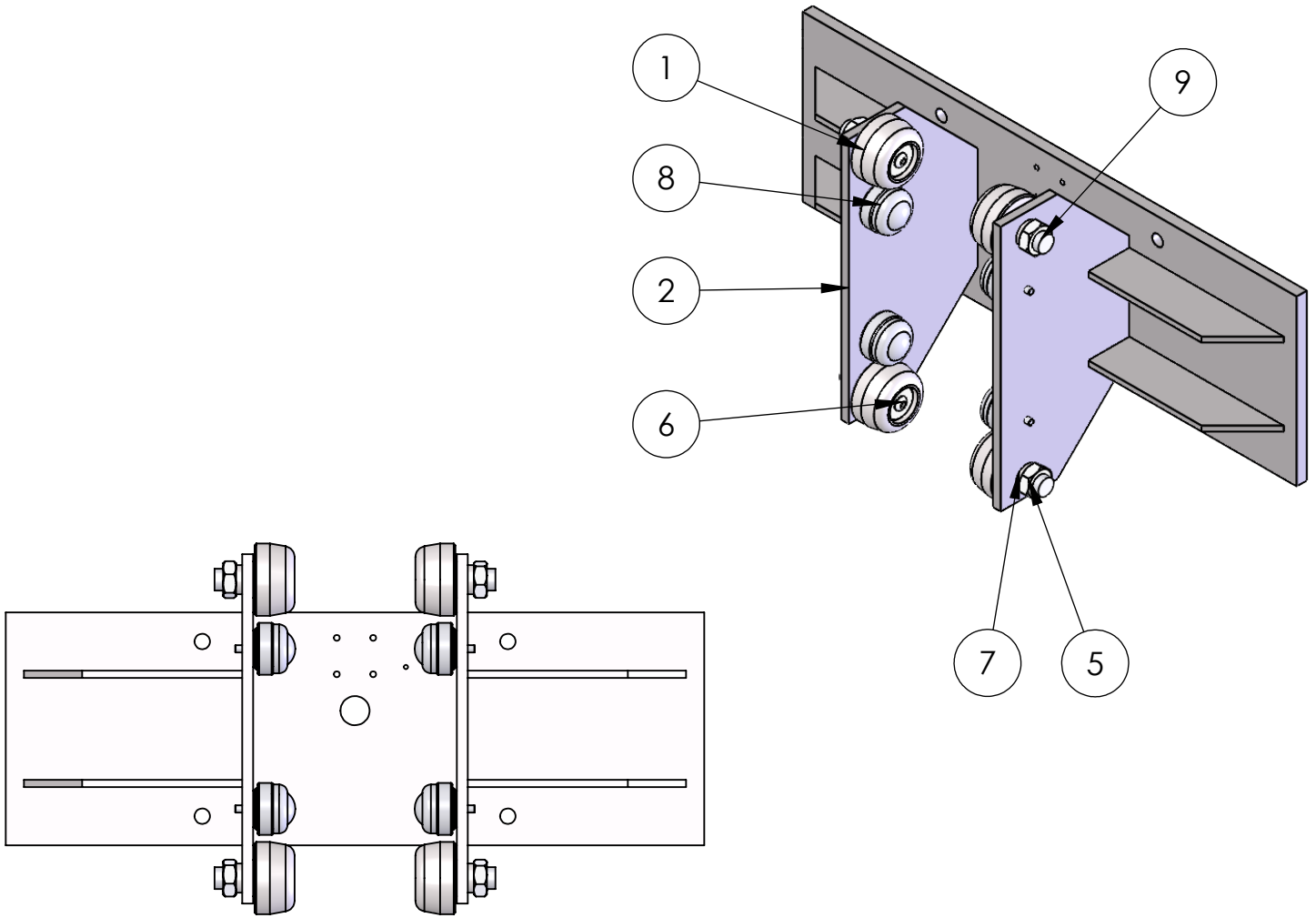
ROTOGRIP-78/SAE



ROTOGRIP-78/SAE

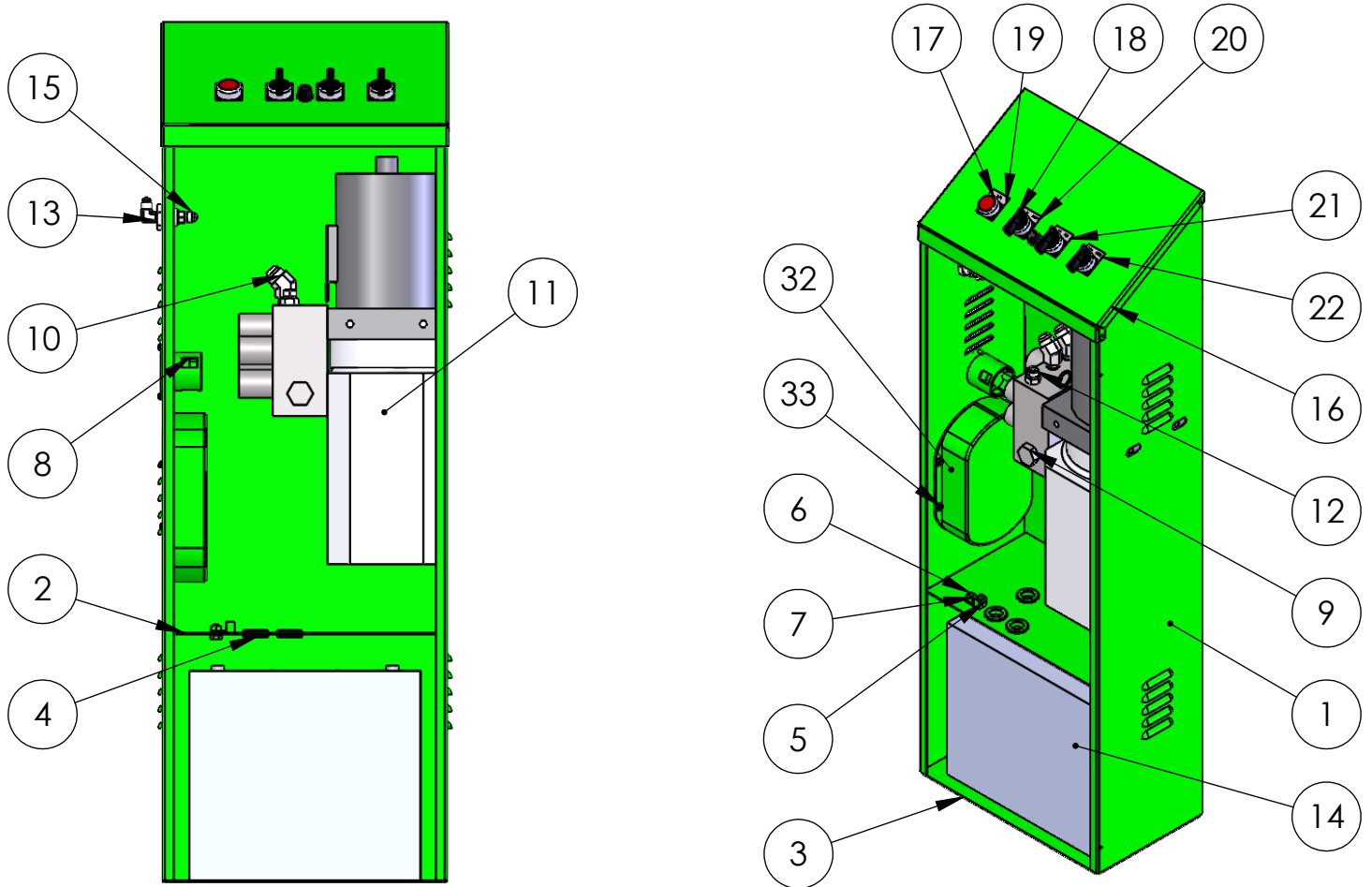
| ITEM NO. | PART NUMBER | DESCRIPTION | QTY. |
|----------|-------------|--|------|
| 1 | F64328A3 | SL WLDMT-90 | 1 |
| 2 | F64367A4 | BACK PL ASSY | 1 |
| 3 | Z30228A2 | CSTR-4X1-1/2 SWL PCI | 2 |
| 4 | Z20754A9 | CYL ASSY-90 SAE | 1 |
| 5 | F63091A3 | SPROCKET ASSY-50C18 BRG 1.01 (purchased) | 1 |
| 6 | Z10123A0 | S-HHC 5/16-18X1 | 8 |
| 7 | Z10036A6 | NUT-HEX KEPS 5/16-18 | 8 |
| 8 | Z10072A1 | PIN-SPG 1/4X1-1/2 | 1 |
| 9 | F52067A6 | PIN-CLEVIS 1.00X2.375 (KANBAN) | 1 |
| 10 | Z10241A7 | BOLT-U 5/16-18 X 2-1/2 | 1 |
| 11 | Z10113A2 | S-HHC 1/4-20X1-1/4 | 2 |
| 12 | Z10043A7 | NUT-NYL NE 1/4-20 | 4 |
| 13 | Z50085A2 | GRIP-HDL 1-1/4" BLK | 2 |
| 14 | F69394A9 | FRT SECT ASSEMBLY/ROTOGRIP | 1 |
| 15 | Z10132A9 | S-HHC 3/8-16X1 | 2 |
| 16 | F63868A5 | JAW WLDMT/RGRIP (8") (stk) | 2 |
| 17 | F53690A9 | PIN 8 3/8 /RGRIP (stk) | 2 |
| 18 | F53691A8 | PIN 6 11/16 RGRIP | 2 |
| 19 | Z10353A1 | PIN-SPG 3/16X1-1/4 | 4 |
| 20 | Z10035A7 | NUT-HEX KEPS 1/4-20 | 8 |
| 21 | Z30561A5 | PIN-CLEVIS 1/2 X 2 | 2 |
| 22 | Z10064A1 | PIN-HITCH CLIP #16 1/8 X 1.44 | 2 |
| 23 | F68729A1 | PANEL ASSY ROTO-GRIP | 1 |
| 24 | F61446A9 | RLR CHAIN ASSY-84 | 1 |
| 25 | F68725A5 | CTRL BOX ASSY/SL MOD | 1 |
| 26 | Z30415A5 | HDL PCKT PULL PLST 3.25X1.41 | 1 |
| 27 | Z00146A4 | ACTUATOR-LINEAR 12DC 500#-12 | 1 |
| 28 | F58825A8 | FRT-CTRL BOX | 1 |
| 29 | Z20734A0 | BREATHER 4 SAE SINTERED--COMES WITH CYLINDERS | 1 |
| 30 | F61306A3 | PP-4SOL/3PORT 12V | 1 |
| 31 | Z20243A4 | FTG PIPE BULKHEAD 1/4 MPT x.92 | 2 |
| 32 | Z20586A6 | FTG 90 2501-4-4 | 2 |
| 33 | Z10207A9 | WASHER-1/4 LOCK INT TOOTH | 4 |
| 34 | Z10186A4 | S-SHC 1/4-20X1/2 GR8 | 4 |
| 35 | Z10074A9 | PIN-SPG 1/4X2 | 2 |
| 36 | Z10122A1 | S-HHC 5/16-18X3/4 | 2 |
| 37 | Z10213A1 | WASHER-5/16 LOCK MD | 2 |
| 38 | Z00172A5 | BATTERY-12V 80AH SEALED LEAD | 1 |
| 39 | Z20600A2 | FTG STR 2404-4-4 | 2 |
| 40 | Z30476A8 | AXLE BOLT ASSY, GREASE, 1/2' X 3" | 2 |
| 41 | Z31606A9 | WHL-6 x 1-1/2 PCI, W/BUSHING | 2 |
| 42 | Z20810A3 | HARNESS-PUMP -/POWER DRIVE | 1 |
| 43 | Z42224A5 | DECAL - WARNING JAW ASSY IN DOWN POSITION | 1 |

BATTERY POWERED ROTOGRIP STRADDLE



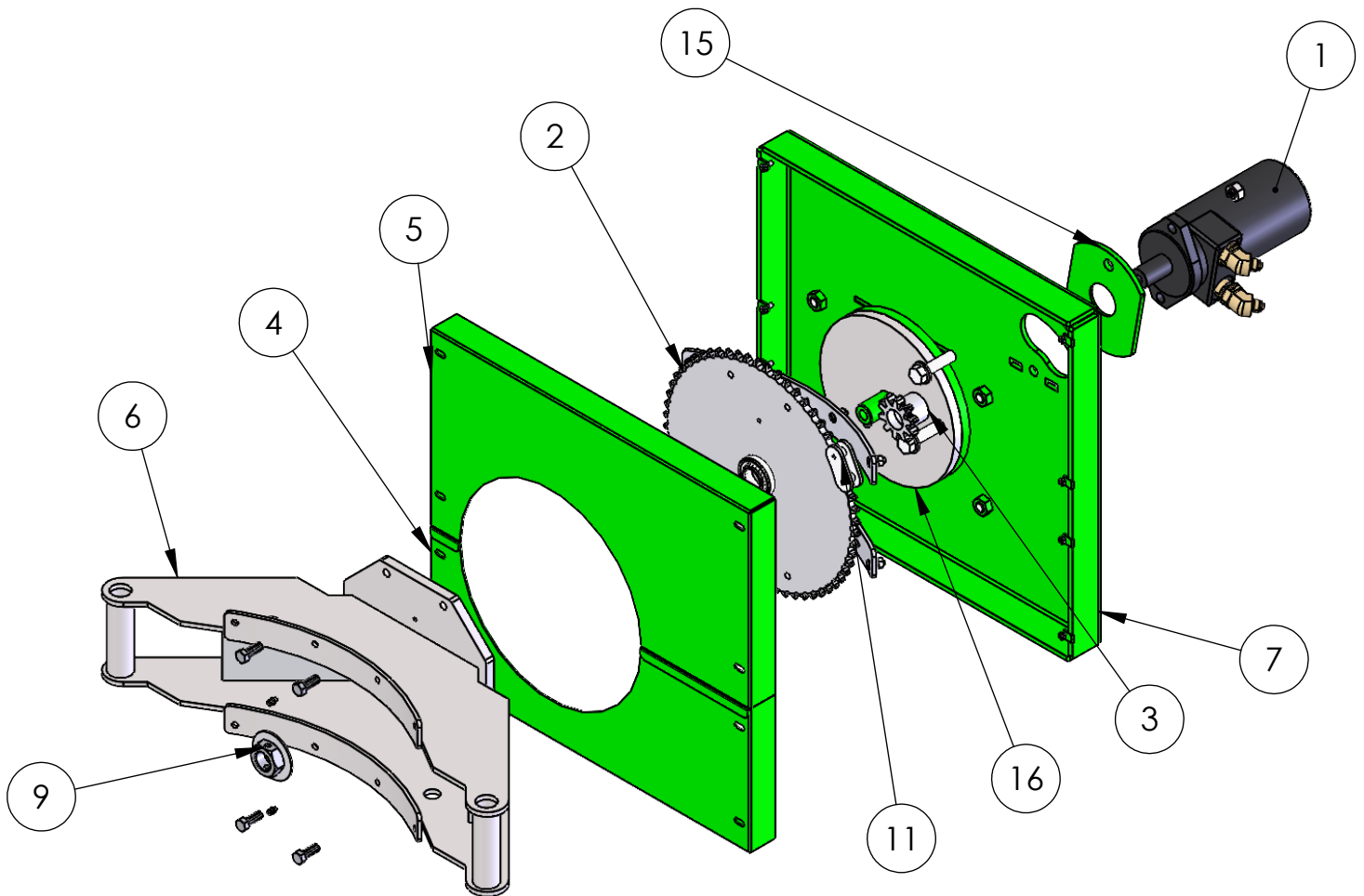
| ITEM NO. | PART NUMBER | DESCRIPTION | QTY. |
|----------|-------------|--------------------------------|------|
| 1 | F64056A3 | GUIDE RLR-BRG ASSY | 4 |
| 2 | F64335A6 | BACK PL WLDMT | 1 |
| 3 | Z10008A0 | BUSH-MACH 6H 3/4x18Gax1-1/4 OD | 4 |
| 4 | Z10042A8 | WASHER-5/16 FNDR X 1-1/4 OD | 8 |
| 5 | Z10461A0 | NUT-HEX JAM 3/4-16 | 4 |
| 6 | Z10539A9 | S-BHSC 5/16-18x3/4 | 4 |
| 7 | Z10594A0 | WASHER-3/4 LOCK MD | 4 |
| 8 | Z30700A8 | BALL TRANSFER-STUD MNT 1/4-20 | 4 |
| 9 | Z51355A9 | GUIDE BOLT-3/4-16 1.00X1.14 | 4 |

BATTERY POWERED ROTOGRIP STRADDLE



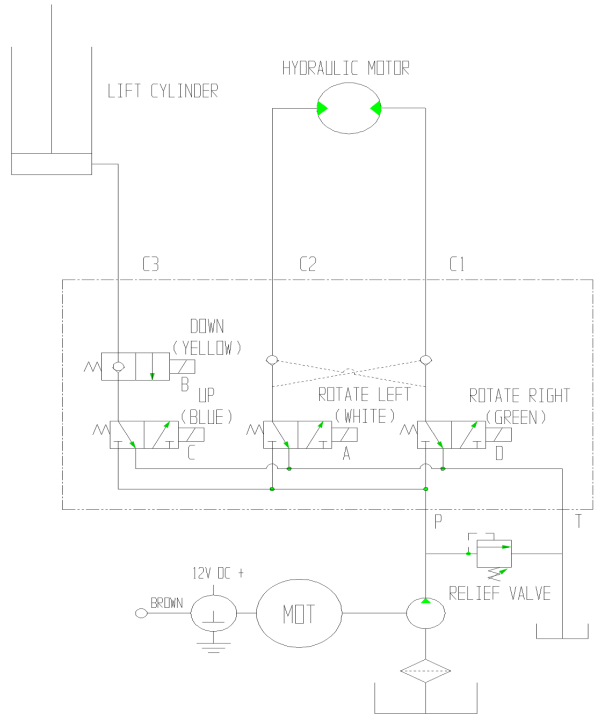
| ITEM NO. | PART NUMBER | DESCRIPTION | QTY. |
|----------|-------------|------------------------------|------|
| 1 | F58826A9 | ENCL-CTRL BOX WLDMT (KANBAN) | 1 |
| 2 | F58827A0 | DVDR-CTRL BOX WLDMT | 1 |
| 3 | F58828A1 | BTM-CTRL BOX WLDMT | 1 |
| 4 | Z00116A0 | GROMMET-.625ID SBR | 3 |
| 5 | Z10708A3 | LUG-SET SCREW 1/4 | 1 |
| 6 | Z10109A8 | S-HHC 1/4-20X1/2 | 1 |
| 7 | Z10035A7 | NUT-HEX KEPS 1/4-20 | 1 |
| 8 | Z00120A4 | PLUG-FLGD INLET 125V | 1 |
| 9 | Z20661A1 | MANIFOLD-4SOL/3PORT 12V | 1 |
| 10 | Z20015A0 | FTG 45 6802-4-6 | 2 |
| 11 | Z20658A4 | PP-BASE/12V | 1 |
| 12 | Z20597A5 | FTG STR 6400-4-6-O | 1 |
| 13 | Z20586A6 | FTG 90 2501-4-4 | 2 |
| 14 | Z00172A5 | BATTERY-12V 80AH SEALED LEAD | 1 |
| 15 | Z20600A2 | FTG STR 2404-4-4 | 2 |
| 16 | F58824A7 | TOP-CTRL BOX (KANBAN) | 1 |
| 17 | Z00522A8 | PB-22MM MOM RED | 1 |
| 18 | Z00523A7 | SWITCH-3 POS MOM SPR RTN | 3 |
| 19 | Z00525A5 | LEGEND-22MM "SAFE" | 1 |
| 20 | Z00526A4 | LEGEND-22MM "UP/DOWN" | 1 |
| 21 | Z00527A3 | LEGEND-22MM "LEFT-RIGHT" | 1 |
| 22 | Z00528A2 | LEGEND-22MM "OPEN-CLOSE" | 1 |
| 30 | Z20107A9 | O'RING-ARP116 | 1 |
| 31 | F57560 | COVER-WGT BOX | 2 |
| 32 | Z20361A1 | BATTERY CHARGER, DELTRAN 24v | 1 |
| 33 | Z10463A8 | S-PTHM #8-32x3/8 | 4 |

BATTERY POWERED ROTOGRIP STRADDLE

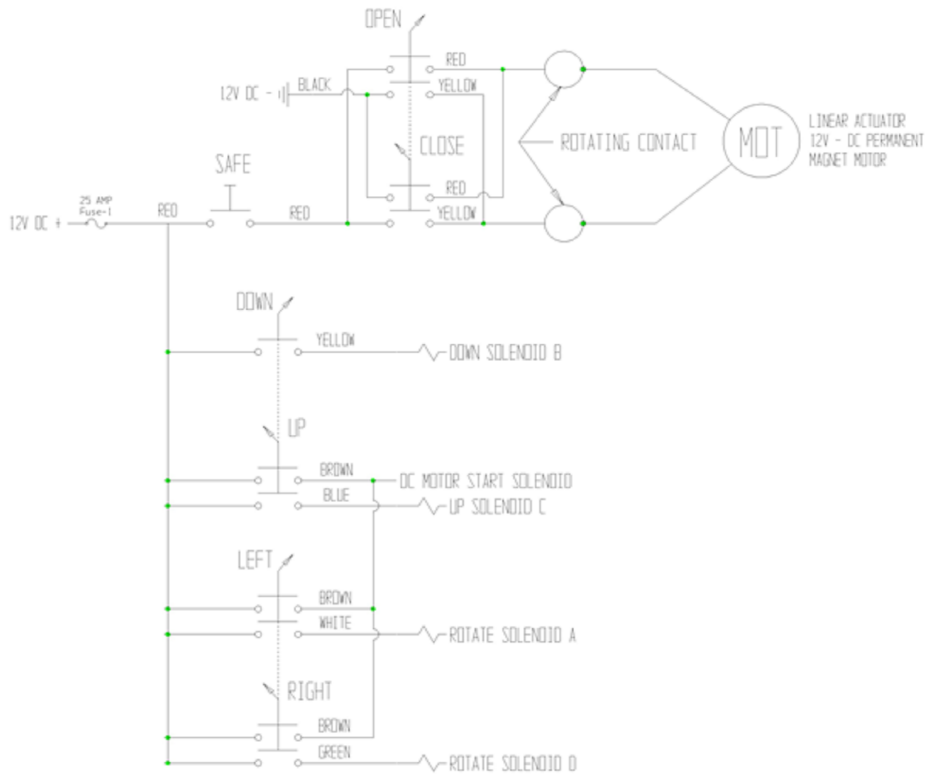


| ITEM NO. | PART NUMBER | DESCRIPTION | QTY. |
|----------|-------------|---------------------------------|------|
| 1 | Z20656A6 | MOTOR-HYD/SAE | 1 |
| 2 | F52650A9 | SPROCKET-LARGE | 1 |
| 3 | Z30400A2 | SPROCKET-SM W/SHS | 1 |
| 4 | F57633 | BTM SPROCKET GUARD/ROTO-LIFT | 1 |
| 5 | F57632 | TOP SPROCKET GUARD/ROTO-LIFT | 1 |
| 6 | F63790A3 | ARM WLDMT/RGRIP | 1 |
| 7 | F69432A8 | BACK SECTION WLDMT/ROTO-LIFT | 1 |
| 8 | Z30420A8 | BRG-TAPER ROLL 1"BOR | 1 |
| 9 | F52527A0 | NUT-LOCK 1-14/DT (KANBAN) | 1 |
| 10 | Z10627A7 | ZERK-GREASE .188 DRIVE | 2 |
| 11 | F30214A4 | CHAIN-RS 50/46" (PURCH) | 1 |
| 12 | Z10620A4 | S-HHC 1/2-13X2 GR 5 | 2 |
| 13 | Z20891A6 | FTG 45 6802-6-10 NWO | 2 |
| 14 | Z10013A3 | WASHER-1 ID X 2-7/16 X 5/64 | 1 |
| 15 | F57403 | MOTOR MOUNT PLATE | 1 |
| 16 | F57491 | SPACER PLATE-1/2X 8-1/2RD | 1 |
| 17 | Z41024A4 | URETHANE-RED 1/4X1-1/2x13 | 2 |
| 18 | Z10099A0 | S-FHM 1/4-20x3/4 | 8 |

BATTERY POWERED ROTOGRIP STRADDLE



HYDRAULIC SCHEMATIC



ELECTRICAL WIRING

Warranty and Limitation of Liability

Valley Craft products are warranted for a period of one (1) year from date of shipment from Valley Craft's plant to be free from defects in material and workmanship under correct use, normal operation and proper application. However, parts of other than Valley Craft manufacture are subject ONLY to the original manufacturer's warranty. Valley Craft's obligation under warranty shall be limited to repair or exchange, at Valley Craft's option, FOB origin factory, of any Valley Craft product or part which proves to be defective as provided herein. Valley Craft reserves the right to either inspect the product at Buyer's location, or require it to be returned to the factory for inspection. The warranty contained herein does not extend to goods damaged, or subject to accident, abuse or misuse after shipment from Valley Craft's factory, nor to goods altered or repaired by anyone other than an authorized Valley Craft representative.

Buyer or user shall not alter, modify or use a Valley Craft product for anything other than its intended function. Valley Craft shall not in any way be responsible for the consequences of any such alteration, modification or misuse.

VALLEY CRAFT MAKES NO EXPRESS WARRANTIES OTHER THAN THOSE WHICH ARE SPECIFICALLY DESCRIBED HEREIN. Any description of the goods sold hereunder, including any references to Buyer's specifications and any descriptions in catalogs, circulars and other written material published by Valley Craft, is for the sole purpose of identifying such goods and shall not create an express warranty that the goods shall conform to such descriptions.

THIS WARRANTY IS EXPRESSLY IN LIEU OF ALL OTHER WARRANTIES, EXPRESS OR IMPLIED. THERE ARE NO IMPLIED WARRANTIES OF MERCHANTABILITY OR FITNESS FOR A PARTICULAR PURPOSE. THIS WARRANTY STATES VALLEY CRAFT'S ENTIRE AND EXCLUSIVE LIABILITY AND BUYER'S EXCLUSIVE REMEDY FOR ANY CLAIM OR DAMAGES IN CONNECTION WITH VALLEY CRAFT PRODUCTS, THEIR DESIGN, SUITABILITY FOR USE, INSTALLATION OR OPERATION OR FOR ANY CLAIMED DEFECTS. VALLEY CRAFT WILL IN NO EVENT BE LIABLE FOR INCIDENTAL OR CONSEQUENTIAL DAMAGES WHATSOEVER, NOR FOR ANY SUM IN EXCESS OF THE PRICE RECEIVED FOR THE GOODS FOR WHICH LIABILITY IS CLAIMED.

Technical Assistance/Warranty Procedure

What's Covered:

Parts and Labor to correct manufacturer's defect within one year of purchase.

Freight Cost

What's Not:

Normal wear items (seal kits, bearings, tires, etc.)

What Voids the Warranty:

Dirt/Grime that directly causes malfunction of product

Abuse (i.e. Overloading, damaged, not properly maintained, etc.)

Product altered by customer

*See "Items not Under Warranty" below for items that have the warranty voided.

Items Under Warranty (less than one year old):

Warranty replacement parts are provided only when the problem can be identified with near certainty. If not, the customer will return item to Valley Craft, freight collect, for troubleshooting and/or repair. When repaired, product will be returned to customer, freight prepaid. Otherwise, customer may call local authorized service technician for assistance. . Under this arrangement, replacement parts will be sent at no charge but labor costs will NOT be covered.

Items NOT Under Warranty (greater than one year old or "having warranty voided):

Customer will return item to valley Craft, freight prepaid, for troubleshooting and/or repair. Valley Craft will call customer with \$\$ estimate of parts and labor for approval before repairing. Product will be returned to customer, freight collect.

Or

Customer may call local authorized service technician for repairs at their own expense.



Valley Craft is a modern metals fabricating manufacturer specializing in material handling, storage and specialized solutions designed with safety and usability in mind, and the simplification of even the heaviest of workloads. Since developing the first hand truck with a brake in 1952, Valley Craft has been a true pioneer in safety-conscious material handling and solution-driven products. Our commitment to continuous improvement in a Lean Manufacturing environment results in safe, functional, quality equipment at affordable prices.

Valley Craft Industries, Inc.

2001 South Highway 61

Lake City, MN 55041 U.S.A.

Phone: (651) 345-3386

Fax: (651) 345-6535

E-Mail: customerservice@valleycraft.com

Website: valleycraft.com