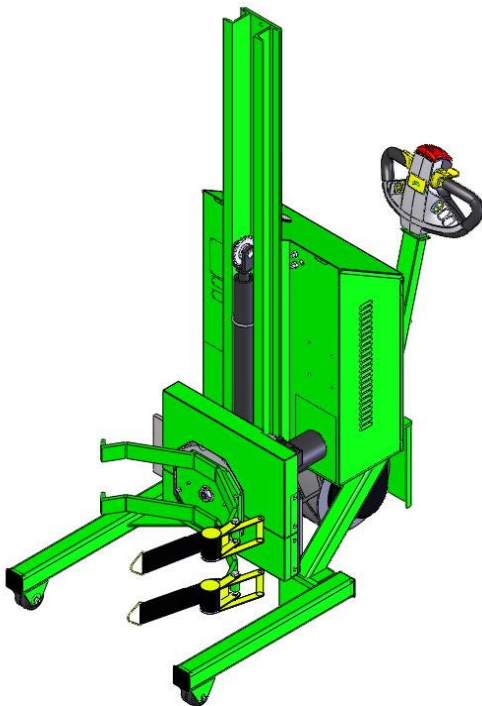
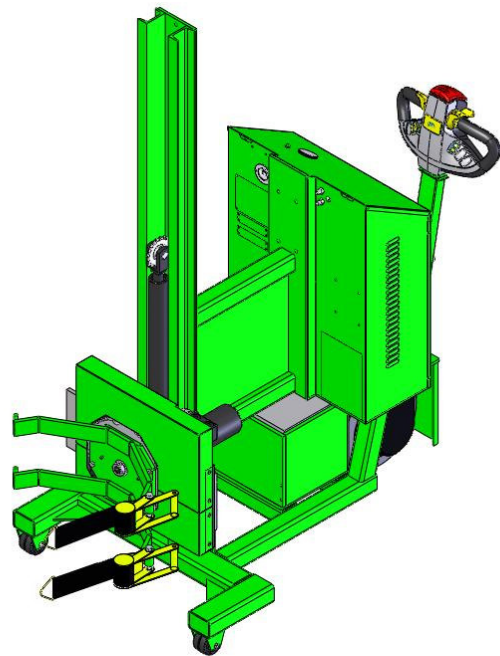

INSTRUCTION MANUAL

VALLEY CRAFT 2001 SOUTH HWY. 61, LAKE CITY, MN 55041 PH: 1-800-328-1480

Roto-Lift w/Powerdrive [F89838A2, F89837A1, F89832A5, F89831A4]



F89838A2
(F89837A1 NOT SHOWN)



F89832A5
(F89831A4 NOT SHOWN)

INSTRUCTION MANUAL

TABLE OF CONTENTS

	<u>Page #</u>
<i>1.0 OPERATING INSTRUCTIONS.....</i>	<i>2</i>
<i>2.0 SAFETY INSTRUCTIONS/MATERIAL SAFETY DATA SHEETS.....</i>	<i>5</i>
<i>3.0 MAINTENANCE INFORMATION</i>	<i>6</i>
<i>4.0 BATTERY CHARGING INSTRUCTIONS.....</i>	<i>7</i>
<i>5.0 PARTS BREAKDOWN</i>	<i>8</i>
<i>6.0 SCHEMATICS</i>	<i>13</i>
<i>7.0 TROUBLESHOOTING GUIDE.....</i>	<i>15</i>
<i>8.0 WARRANTY.....</i>	<i>16</i>

1.0 OPERATING INSTRUCTIONS

NOTE: IT IS RECOMMENDED THAT ALL OPERATORS FAMILIARIZE THEMSELVES WITH THE MACHINE AND DEVELOP SAFE WORKING HABITS.

1. **IMPORTANT!** Remove solid plug on hydraulic reservoir and install breather cap (included with the Power Pak) for proper air venting.

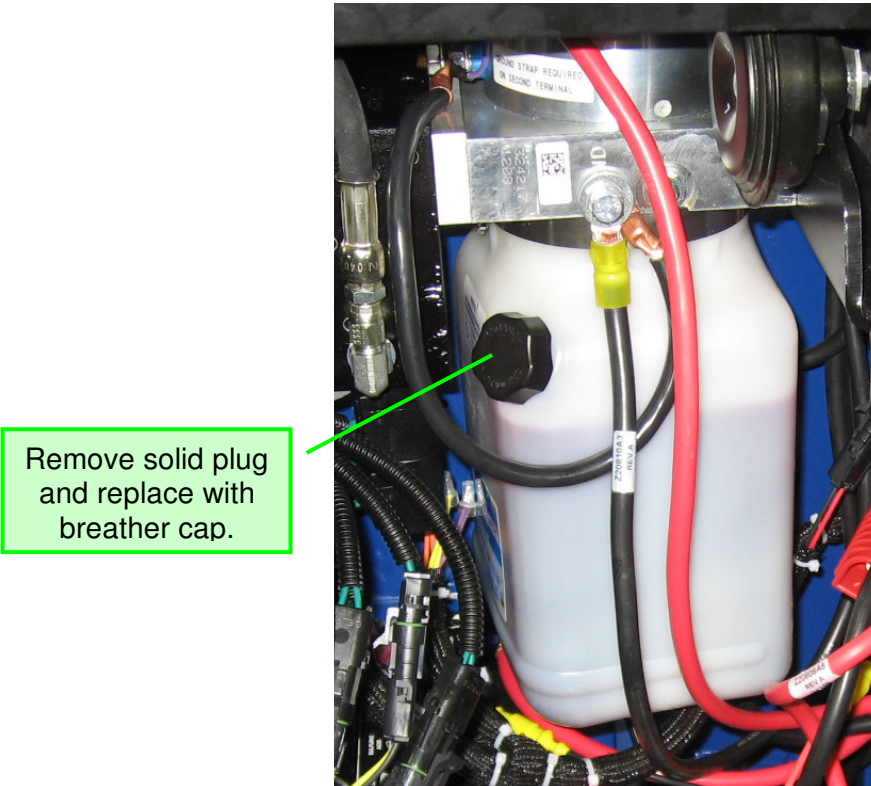


Figure 1 - Power Pak located in control panel.

2. Connect main power disconnect inside the control box.

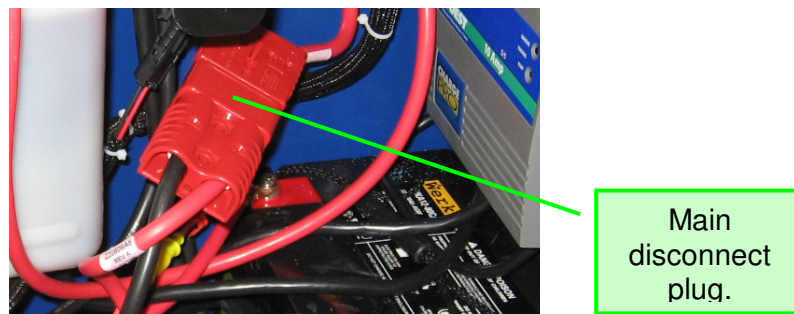


Figure 2 - Main disconnect plug.

3. Turn the Roto-Lift on using key switch located on tiller head.

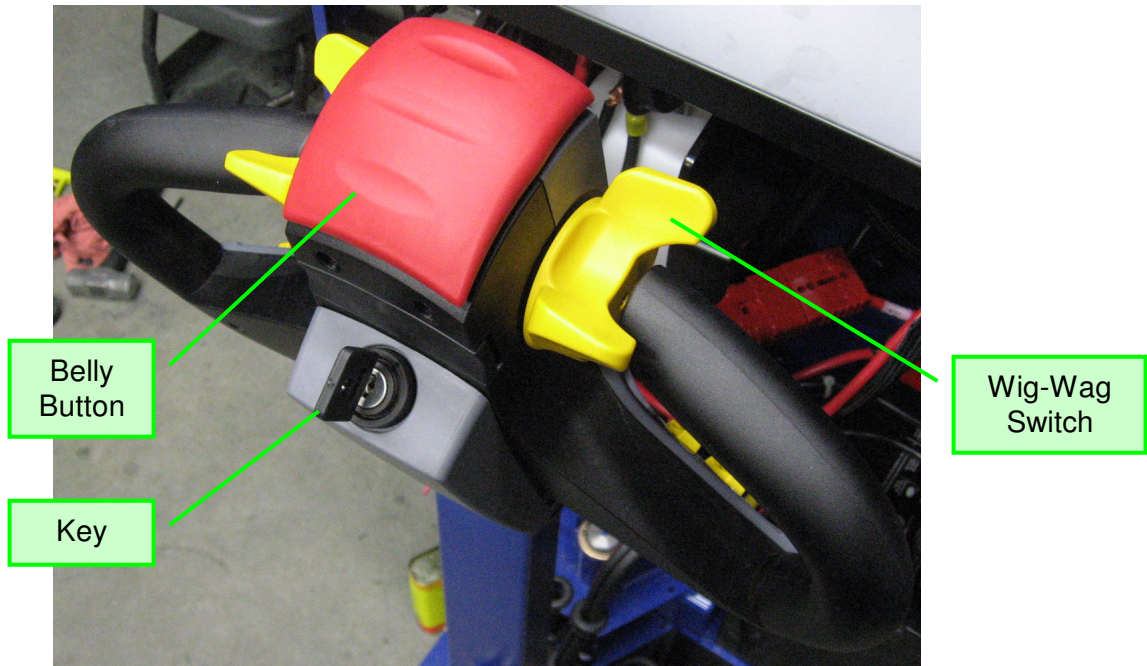


Figure 3 - Tiller head.

4. Drive by using the wig-wag switch on the tiller head to move the Roto-Lift forward and backward. (See Figure 3.)
5. Loosen rotator straps in the following way. A) Depress “finger release” on ratchet and fold handle open. B) Pull strap through ratchet just far enough to unhook metal ring from T-bar at the end of the rotating arm. C) Perform this on both ratchets.
6. To pick up a drum, position the Roto-Lift so the jaw arms straddle the drum, center the arms using the “UP/DOWN” switch on the control panel.



Figure 4 - UP/DOWN and RIGHT/LEFT switches on the tiller head.

7. After arms are centered on drum, drive the unit forward until drum touches the rear of the arms
8. Pull both straps around the front of the drum and hook the metal ring onto the T'bar on the end of the rotating arms.
9. By depressing the “finger release” on the ratchet and returning it to the original position, you may now ratchet the straps tight around the drum.
10. With **BOTH** straps tight, raise the drum by using the “up” function switch.
11. To tip the drum, raise the drum to the desired height and depress the “Rotate” switch on the tiller head in the direction you want the drum to tip.

2.0 SAFETY INSTRUCTIONS

1. When transporting a load, it is recommended the drum is lowered as close to the floor as possible to reduce the chance of accidents during transport.
2. Do not leave load suspended for an extended period of time. Premature wear to lifting cylinder will occur.
3. The red belly switch on tiller head stops unit reverse motion and causes the Roto-Grip to creep forward to prevent crushing

4. *Maximum lifting capacity is 1000 pounds.*

MATERIAL SAFETY DATA SHEETS (MSDS)

A Material Safety Data Sheet (MSDS) provides information on the safe use, handling and potential hazards of a product. This information assists with the proper response in the event of an emergency.

Valley Craft maintains material safety data sheets (MSDS) on all our products. You are urged to obtain copies of the relevant MSDSs before using our products to protect yourself and others against any known health or safety hazards described in these MSDSs. Valley Craft strives to make safety a top priority. Do not hesitate to contact us to discuss any safety aspects of our products.

The relevant MSDS codes for Valley Craft products are listed below.

www.conocophillips.com

Super ATF Transmission Oil, MSDS Code 778846

Super-Sta Grease, MSDS Code 775440

www.batteriesplus.com

Sealed Lead Acid Battery

SLA for English version

SLA Sp for the Spanish version

[Paint](#)

Contact Valley Craft Customer Services at 1-800-328-1480 or on the web at customer@valleycraft.com

3.0 MAINTENANCE INFORMATION

1. Use only 12Volt 80AH sealed lead acid AGM batteries. Approximate dimensions of the battery are 10.25”L X 6.75”W X 8.375”H (to top of terminals). Battery warranty typically covers free replacement within one year of purchase.
2. Check hydraulic fluid every 40 hours or before using the machine after long set-aside periods. Three quarts of hydraulic fluid is sufficient to operate the system properly. Do not overfill. Use **Dextron automatic transmission fluid only.**
3. The lifting chain should be oiled periodically as needed. This is best accomplished by lowering the backplate completely and spraying a lubricant onto the chain.
4. The front section assembly has two grease zerks on the backplate and should be greased ever 100 hours of use.
5. Check nylon straps occasionally for wear and replace as necessary.

4.0 BATTERY CHARGING INSTRUCTIONS

1. Turn key on tiller head to the off position.
2. Plug a grounded extension cord into built-in receptacle on control box and plug into a 110VAC outlet.



Figure 5 - Built-in 110VAC receptacle for charging.

3. The Roto-Grip will charge automatically, and can be left unattended while charging.
4. When re-charging is finished, unplug extension cord from control box.

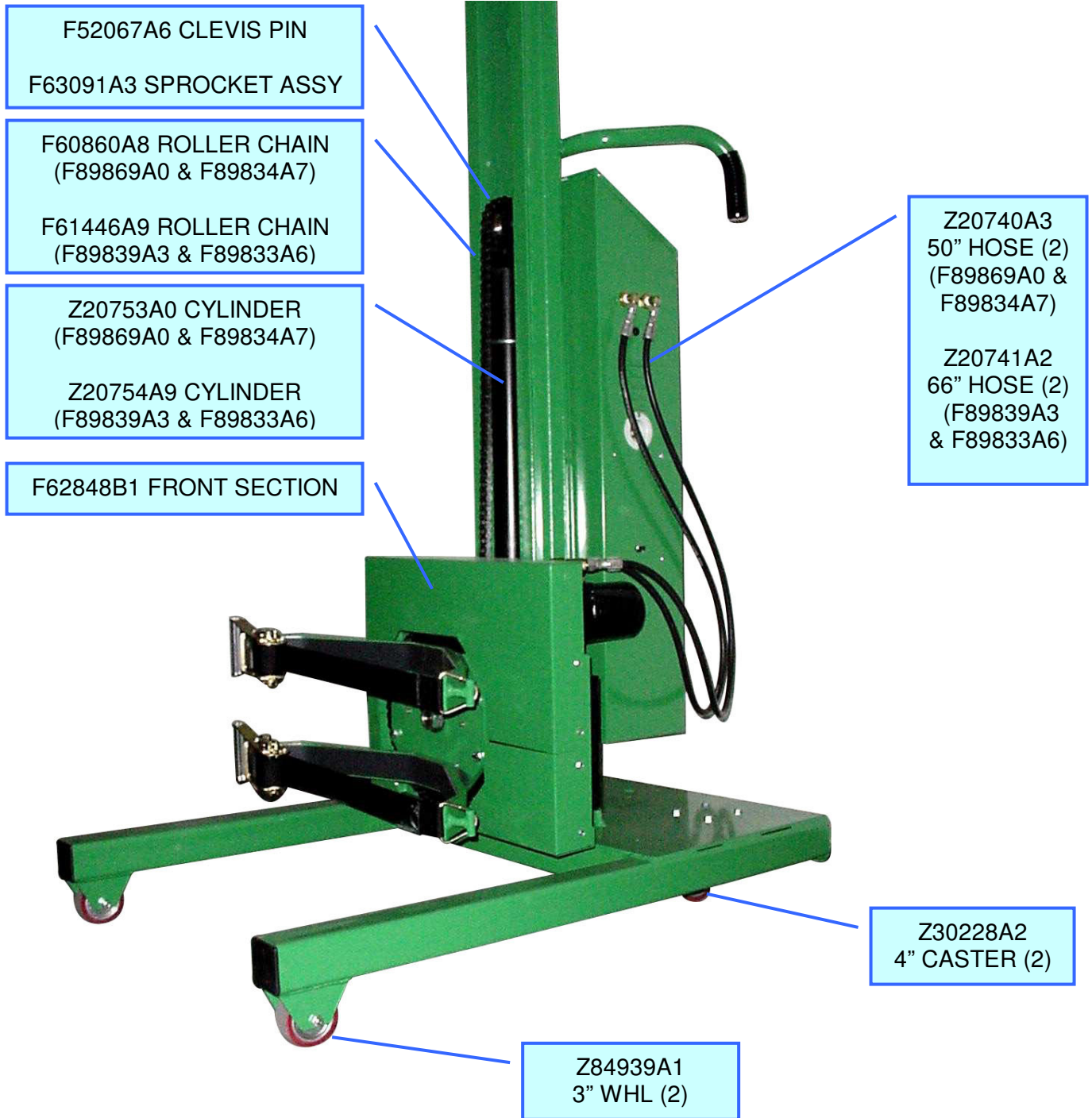
Notes:

- A. Generally, batteries will require equal charging time to work time. (Ex. One hour of machine use will require one hour of re-charging time.)
- B. It is not recommended that alternate charging devices be used.

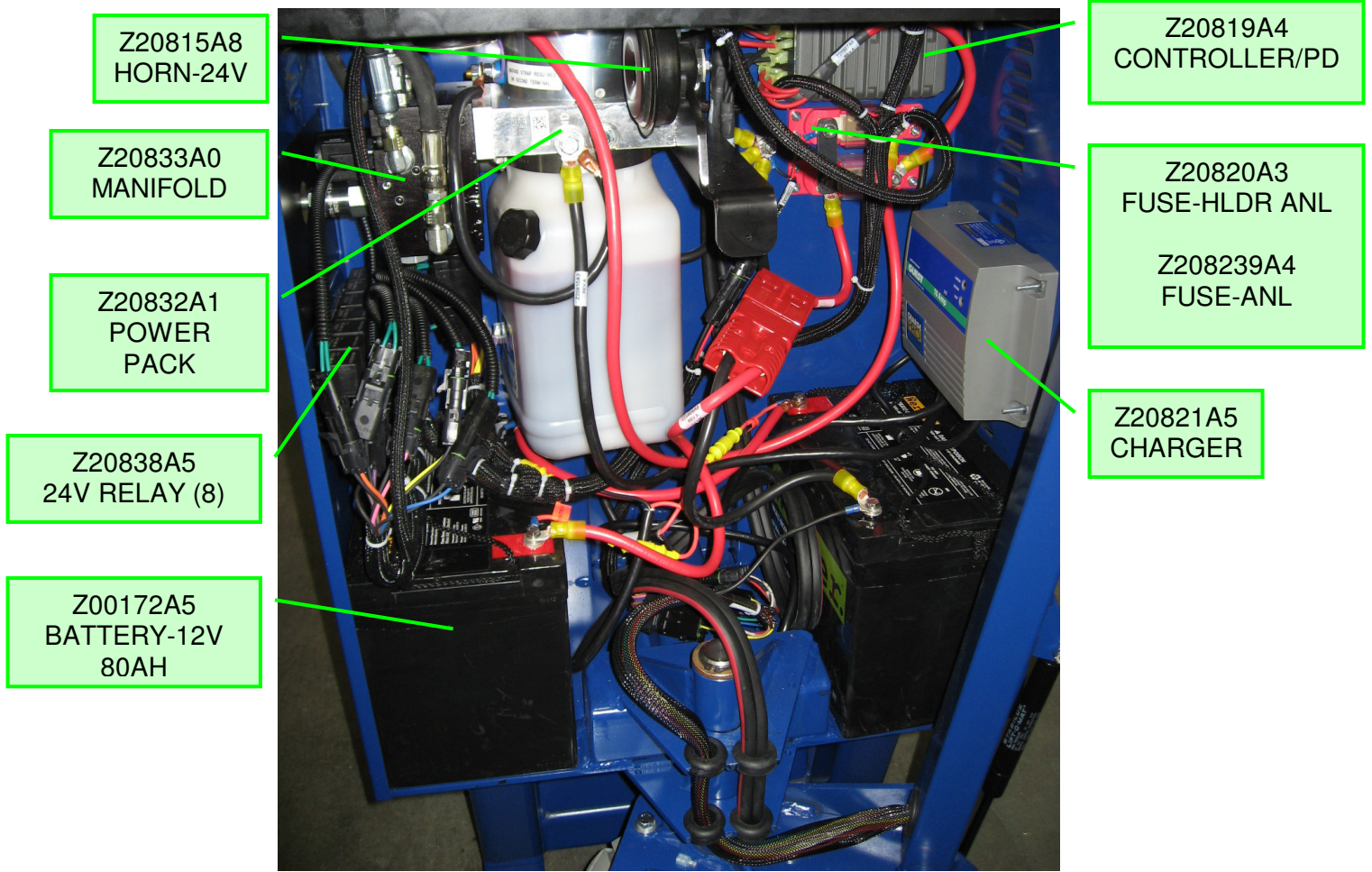
C. CAUTION! To avoid shock or burn, NEVER touch the unit while recharging.

5.0 PARTS BREAKDOWN

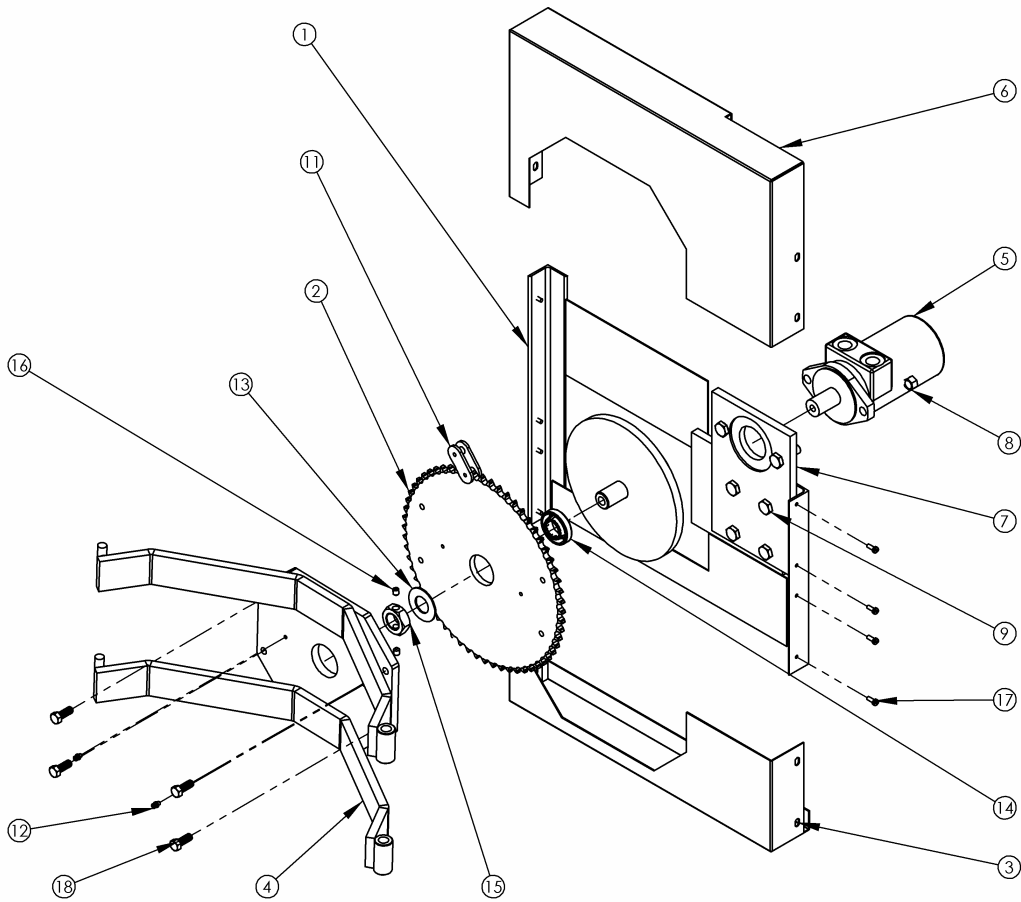
ROTOLIFT POWER DRIVE (STANDARD FRAME SHOWN)



CONTROL BOX

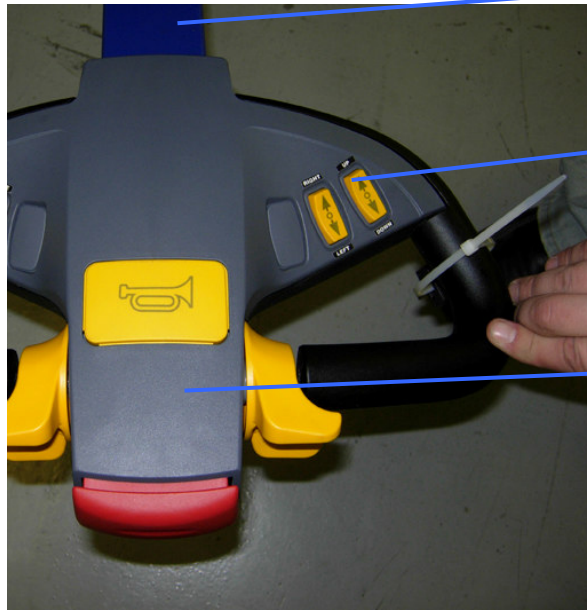


FRONT SECTION ASSEMBLY **(F62848B1)**



ITEM NO.	PART NUMBER	DESCRIPTION	QTY.
1	F62630A3	BACK SECT WLDMT/ROTO	1
2	F52650A9	SPROCKET-LARGE	1
3	F52649A3	GUARD-CHAIN BTM/ROTO	1
4	F62629A6	FRT SECT WLDMT/ROTO	1
5	Z20656A6	MOTOR-HYD/SAE	1
6	F52648A4	GUARD-CHAIN TOP/ROTO	1
7	F52651A8	MOTOR MNT/ROTO	1
8	Z10393A3	NUT-LOCK- 1/2-13	1
9	Z10148A1	S-HHC 1/2-13X1-1/2 GR2	6
10	Z10026A8	NUT-HEX JAM 3/8-16ZP	4
11	F30214A4	CHAIN-ROLLER/ROTO	1
12	Z10627A7	ZERK-GREASE .188 DRIVE	2
13	Z10430A5	BUSH-MACH 1X14GAX2	1
14	Z30420A8	BRG-TAPER ROOL 1" BORE	1
15	F52527A0	NUT-LOCK 1-14/DT	1
16	Z10090A9	S-SHS 5/16-18 X 3/8	2
17	Z10166A8	S-HHTC #10-24 X 1/2	9
18	Z10132A9	S-HHC 3/8-16X1	4

TILLER HEAD



F68098A3
TILLER WLDMT

Z20794A9
SWITCH-
ROCKER
(2)

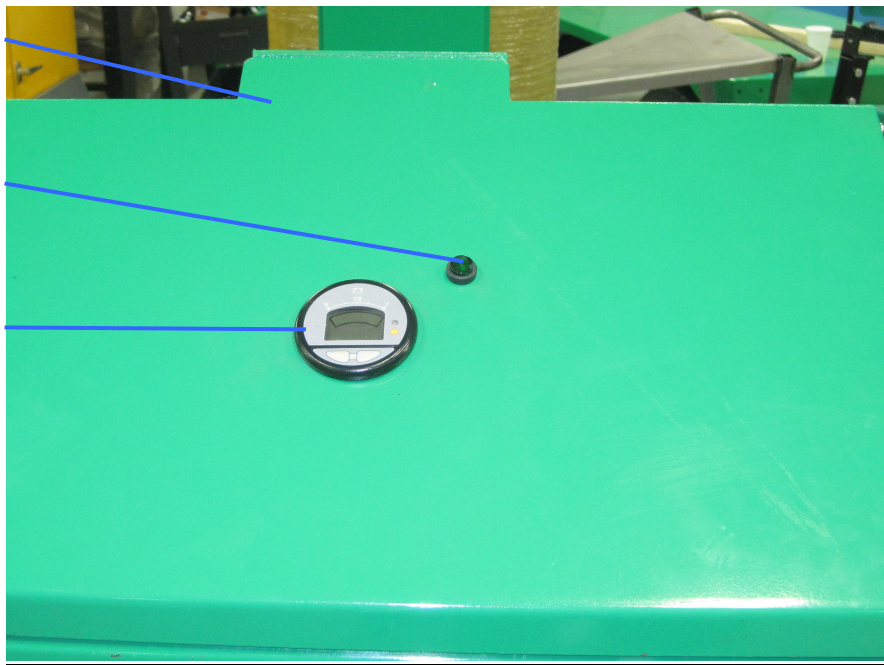
Z20823A0
TILLER
HEAD

CONTROL BOX TOP

F58406A4
TOP-CTRL
BOX

Z20817A6
LIGHT-
INDICATOR

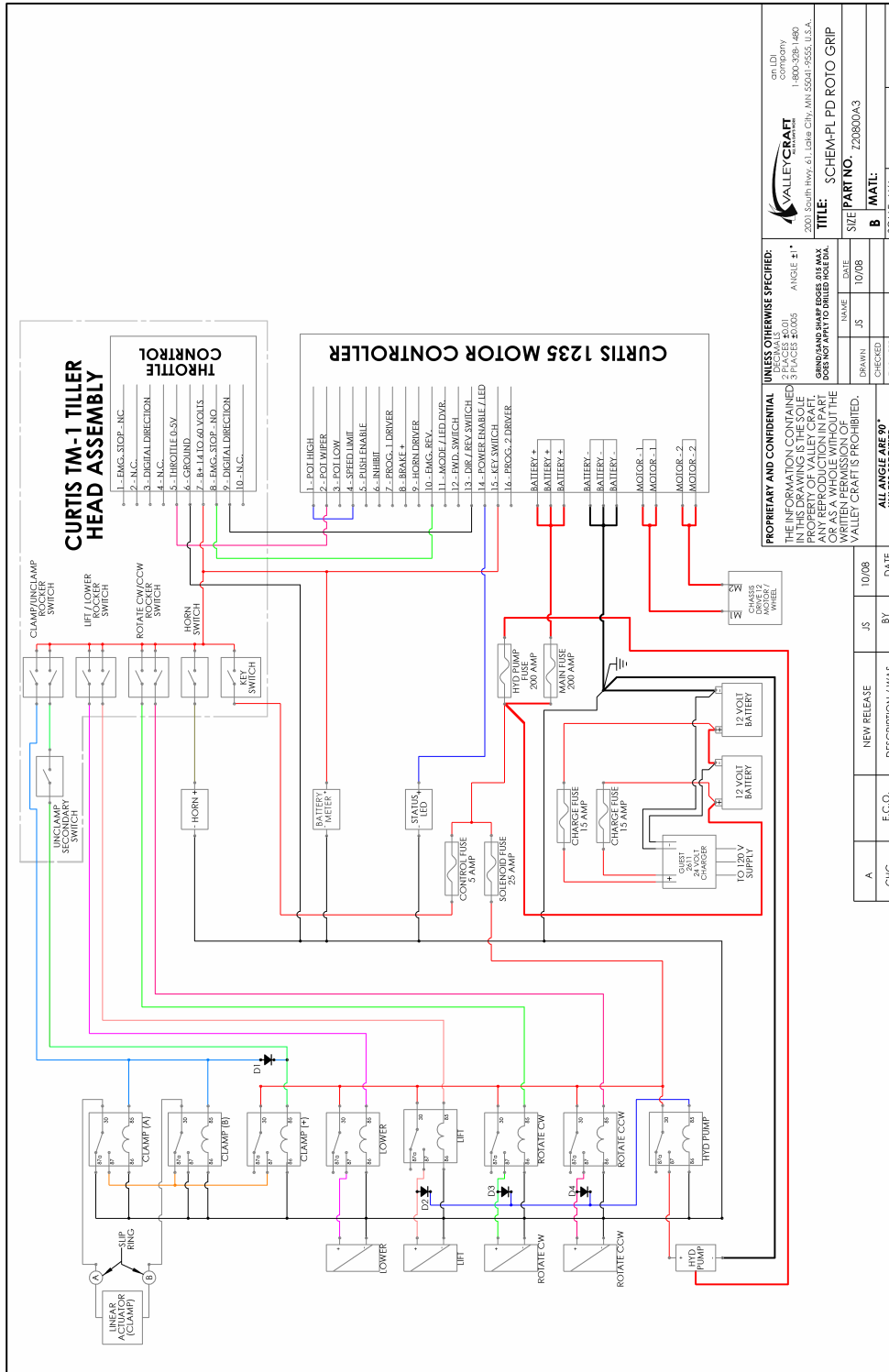
Z20836A7
GUAGE-
BATTERY

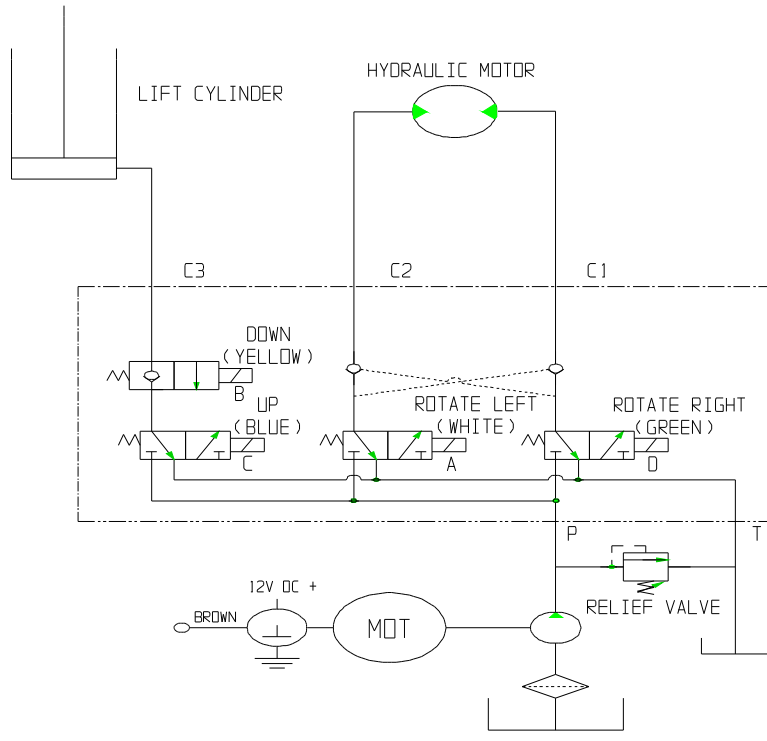


REPLACEMENT PARTS NOT SHOWN

NUMBER	PART NUMBER	DESCRIPTION	QTY
1	Z20802A1	HARNESS-MAIN/POWER DR	1
2	Z20803A0	HARNESS-TILLER/POWER	1
3	Z20804A9	HARNESS-BATT CHRGR/PO	1
4	Z20805A8	HARNESS-DRIVE MOT/POW	1
5	Z20806A7	HARNESS-CNTRLR -/POWE	1
6	Z20807A6	HARNESS-CNTRLR +/POWE	1
7	Z20808A5	HARNESS-BATTERY/POWER	1
8	Z20809A4	HARNESS-CHASIS/POWER	1
9	Z20810A3	HARNESS-PUMP -/POWER	1
10	Z20811A2	HARNESS-PUMP +/POWER	1
11	Z00117A9	CABLE-BAT RED 6LG	1
12	Z00114A2	CABLE-BAT BLK 15.5LG	1

6.0 SCHEMATICS





HYDRAULIC SCHEMATIC

7.0 TROUBLESHOOTING GUIDE

PROBLEM	POSSIBLE CAUSE	SOLUTION
Batteries won't charge	Faulty Battery(s)	Load test Batteries to ensure it is good. If battery is bad see page 7 for replacement.
	Not following recharging directions	Refer to Battery Charging Instructions (Page 4)
	Improper grounding/wiring	Tighten Charger mounting bolts and check wiring
Unit not functioning	Low/Dead Batteries	Recharge Batteries
	Improper grounding	Check Motor & Battery wire connections. Tighten if necessary
	Damaged or loose wiring	Check wiring to switches in Control Box. Re-attach loose connections.
	Bad Switches	Call factory for replacement

The Curtis 1235 controller can provide diagnostics information to assist technicians in troubleshooting drive system problems. The diagnostics information can be obtained in two ways: observing the fault codes issues by the Status LED or reading the appropriate display on the handheld programmer. For more information contact your local Curtis representative or contact Valley Craft.

8.0 WARRANTY

Warranty & Limitation of Liability

Valley Craft products are warranted for a period of one (1) year from date of shipment from Valley Craft's plant to be free from defects in material and workmanship under correct use, normal operating and proper application. However, parts of other than Valley Craft manufacture are subject ONLY to the original manufacturer's warranty. Valley Craft's obligation under warranty shall be limited to repair or exchange, at Valley Craft's option, FOB origin factory, of any Valley Craft product or part which proves to be defective as provided herein. Valley Craft reserves the right to either inspect the product at Buyer's location, or require it to be returned to the factory for inspection. The warranty contained herein does not extend to goods damaged, or subject to accident, abuse or misuse after shipment from Valley Craft's factory, nor to goods altered or repaired by anyone other than an authorized Valley Craft representative.

Buyer or user shall not alter, modify or use a Valley Craft product for anything other than its intended function. Valley Craft shall not in any way be responsible for the consequences of any such alteration, modification or misuse.

VALLEY CRAFT MAKES NO EXPRESS WARRANTIES OTHER THAN THOSE WHICH ARE SPECIFICALLY DESCRIBED HEREIN. Any description of the goods sold hereunder, including any references to Buyer's specifications and any descriptions in catalogs, circulars and other written material published by Valley Craft, is for the sole purpose of identifying such goods and shall not create an express warranty that the goods shall conform to such descriptions.

THIS WARRANTY IS EXPRESSLY IN LIEU OF ALL OTHER WARRANTIES, EXPRESS OR IMPLIED. THERE ARE NO IMPLIED WARRANTIES OF MERCHANTABILITY OR FITNESS FOR A PARTICULAR PURPOSE. THIS WARRANTY STATES VALLEY CRAFT'S ENTIRE AND EXCLUSIVE LIABILITY, AND BUYER'S EXCLUSIVE REMEDY FOR ANY CLAIM FOR DAMAGES IN CONNECTION WITH VALLEY CRAFT PRODUCTS, THEIR DESIGN, SUITABILITY FOR USE, INSTALLATION OR OPERATION OR FOR ANY CLAIMED DEFECTS. VALLEY CRAFT WILL IN NO EVENT BE LIABLE FOR INCIDENTAL OR CONSEQUENTIAL DAMAGES WHATSOEVER, NOR FOR ANY SUM IN EXCESS OF THE PRICE RECEIVED FOR THE GOODS FOR WHICH LIABILITY IS CLAIMED.

Technical Assistance/Warranty Procedure

What's Covered:

- Parts and Labor to correct manufacturer's defect within one year of purchase.
- Freight Cost

What's Not:

- Normal wear items (seal kits, bearings, tires, etc.)

What Voids the Warranty:

- Dirt/Grime that directly causes malfunction of product
 - Abuse (i.e. Overloading, damaged, not properly maintained, etc.)
 - Product altered by customer
- *See "Items not Under Warranty" below for items that have the warranty voided.

Items Under Warranty (less than one year old):

- Warranty replacement parts are provided only when the problem can be identified with near certainty. If not, the customer will return item to Valley Craft, freight collect, for troubleshooting and/or repair. When repaired, product will be returned to customer, freight prepaid. Otherwise, customer may call local authorized service technician for assistance. . Under this arrangement, replacement parts will be sent at no charge but labor costs will NOT be covered.

Items NOT Under Warranty (greater than one year old or *having warranty voided):

- Customer will return item to Valley Craft, freight prepaid, for troubleshooting and/or repair. Valley Craft will call customer with \$\$ estimate of parts and labor for approval before repairing. Product will be returned to customer, freight collect.

Or

- Customer may call local authorized service technician for repairs at their own expense.

240001A7